



## Professional label printer with USB and Wi-Fi Connectivity

Design and print **durable labels** using the graphic display and professional keyboard, or from your PC, Mac, smartphone or tablet.

- Create durable labels up to 36mm in width
- High speed and high resolution printing
- Wi-Fi connectivity to print labels from tablets/smartphones
- Professional keyboard with integrated graphic backlit LCD
- Many built-in label templates for easy label creation
- Integrated carrying handle and storage area for additional tape cassettes
- Advanced cutter with easy label peel function
- PC/Mac software and iOS/Android label design apps available
- Optional Li-Ion rechargeable battery available







*P-touch*

The **PT-D800W** is a **professional label printer** that produces labels up to 36mm in width. **Print text, barcodes, images and logos onto laminated, durable labels** that are suitable for **indoor or outdoor use**.

You can also connect by **USB or Wi-Fi** to design labels on your **PC, Mac, smartphone or tablet** using the **free** label design software and apps available.



### Professional label printing wherever and whenever needed

With a wide range of tape colour combinations and widths, and high speed/high resolution print capabilities, the PT-D800W is ideal for cable marking, facilities management, document archiving, asset labelling and creating on-demand labels whenever and wherever required. Choose from the many built-in label creation options, or use USB or Wi-Fi connectivity to design and print labels from your PC/Mac, or on your iOS/Android smartphone or tablet.



### Advanced print engine for fast, efficient labelling

The PT-D800W produces labels from 3.5mm up to 36mm wide, and with a 32mm print height offers near edge-to-edge printing, minimising the margins around the outside of your labels. A print speed of up to 60mm/second dramatically reduces the printing time normally associated with other label printers – particularly useful when using the advanced cutter to produce a long strip of labels that are easily peeled one-at-a-time, and ensures your labels are kept in the correct order.

### Industrial label design software for PC and Mac

P-touch Editor offers powerful label design software for Windows and Mac. It boasts advanced features normally found in expensive desktop applications such as industry standard 1D and 2D barcodes, import of logos and other graphics, and allows you to use the fonts installed on your computer. Link to a Microsoft Excel® spreadsheet or a .csv file to print multiple labels quickly and efficiently.



### Wireless connectivity for ultimate flexibility

Create and print labels from your smartphone or tablet quickly without needing to boot your PC or Mac. The Brother iPrint&Label app connects wirelessly using Wi-Fi direct to let you design simple labels on your iOS or Android device.

Or if you need to identify electrical and data cabling and equipment, use the specialised Brother Cable Label Tool app to quickly print labels for wrapping around cables or for sticking to faceplates, electrical distribution boards, cabinets, servers and other equipment. The PT-D800W can also be connected to your office wireless network, and allow multiple users to print labels from their PC or Mac whenever required.

### Store your own label templates and logos for use any time

Create a label design template on your PC, then transfer to the built-in memory of the PT-D800W. This powerful feature lets you edit the text before printing, ensuring your labels all use the same uniform format. You can also upload your own images such as company logos or specialist symbols for printing away from your PC.

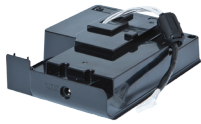


### Portable solution to create labels wherever required

Featuring a full-size laptop style keyboard with integrated easy-to-read graphic display, the PT-D800W can be used on-site to instantly create durable labels on demand. Use the many built-in templates, block layouts and hundreds of office and industrial symbols to quickly create labels for any application. The built-in carrying handle and storage area for tape cassettes and AC adapter mean you can easily take the PT-D800W on-site, wherever required. Attach the optional battery base and rechargeable lithium-ion battery pack to allow label printing wherever and whenever required.



## Optional accessories



### PA-BB-003

Battery base for lithium-ion battery



### PA-BT-4000LI

Lithium-ion rechargeable battery

## Specifications

### Main Features

Prints labels up to 36mm in width | Maximum print height of 32mm for near edge-to-edge printing  
360dpi print resolution for crisp, legible text, images and barcodes  
Fast print speed of 60mm/second  
Built-in automatic label cutter with easy-peel function  
Minimum label length: 5mm | Maximum label length: 1 metre  
Large backlit graphic LCD - 17 characters x 4 lines  
Built-in clock to include date/time on your labels  
Full size detachable keyboard with professional PC style keys

### Connectivity: Wired

USB: Windows®(USB1.1, 2.0, 3.0 protocol) | Mac (USB 1.0, 2.0 protocol)

### Connectivity: Wireless

Wireless Direct: IEEE802.11n | Ad-Hoc mode: IEEE802.11b | Infrastructure mode: IEEE802.11b/g/n | WPS 2.0

### Label creation (using built-in functions)

14 fonts with 12 character styles  
99 frames and 465 symbols to further customise your labels  
Large text buffer of 1,500 characters per label  
99 memory locations to store frequently used labels  
35 label auto formats and 32 block layouts to speed up label design  
Special functions to create labels for cables, patch panels and faceplates

### Label creation (PC/Mac)

Uses P-touch Editor professional label design software  
Link to data stored in Microsoft® Excel® (Windows®) and .csv (Mac) files, to print multiple labels efficiently  
Choose any of the fonts installed on your PC/Mac  
Supports popular image formats (.bmp, .dib, .jpg, .tif, .ico, .wmf)  
Includes hundreds of frames and symbols to customise your label  
Supports industry standard barcode protocols

### Label creation (iOS/Android)

Free iPrint&Label app is available for general labelling applications  
Free Cable Label Tool app is available for easy labelling of cables, patch panels, faceplates and switches

### Barcode protocols supported

1D: CODE39, CODE128, ITF 2/5, EAN13, EAN8, UPC-A, UPC-E, CODABAR, GS1-128 (UCC/EAN128)  
2D: QR Code, PDF417, Data Matrix, Aztec Code, RSS-14 (Standard, Truncated, Stacked, StackedOmni), RSS-Limited, RSS Expanded (Standard, Stacked)

### Dimensions and weights

337mm (w) x 188mm (d) x 173mm (h) | 3.4kg

### Supplied with printer

36mm black on white laminated label cassette (8m)  
AC adapter  
2 x USB cable (to connect to PC/Mac and to supplied keyboard)  
User guide

### Tape types supported

TZe tape cassettes: 3.5mm-36mm  
HSe heat-shrink tube: 5.8mm-23.6mm  
FLe die-cut labels: 45mm x 21mm size

### System Requirements

**Operating Systems:** Microsoft® Windows Vista® | Microsoft® Windows® 7 | Microsoft® Windows® 8 | Microsoft® Windows® 8.1  
Microsoft® Windows® 10 | Microsoft® Windows Server® 2008 | Microsoft® Windows Server® 2008 R2 | Microsoft® Windows Server® 2012  
Microsoft® Windows Server® 2012 R2 | Mac OS X 10.9.5/10.10.x/10.11.x

**Hard disk space:** Windows®: More than 70MB | Mac: More than 500MB

**System memory:** As per operating system requirements

**Microsoft® Office® support for P-touch add-in:**

Microsoft® Word 2007/2010/2013/2016 | Microsoft® Excel® 2007/2010/2013/2016 | Microsoft® Outlook® 2007/2010/2013/2016

Microsoft, Windows, Windows Server and Windows Vista are either registered trademarks or trademarks of Microsoft Corporation in the United States and/or other countries. Apple, Mac, Mac OS, iPhone, iPad and iPod touch are trademarks of Apple Inc., registered in the U.S. and other countries.

Contact:

### Brother UK Ltd

Shepley Street, Audenshaw, Manchester M34 5JD.  
Tel: +44 (0) 333 777 4444 Fax: +44 (0) 161 931 2218.  
www.brother.co.uk