

# A10™

## Automatic Welding Helmet



Extremely light, but strong in performance, the A10 welding helmet offers premium reliability at an affordable price. The A10 helmet uses high performance ADF with exceptional optical class. The A10 can be used for most welding processes, such as stick electrodes (SMAW) and MIG/MAG (GMAW).

- Lightweight housing and great design – Only 382 g (0.8 lb), offering comfort for everyday welding applications
- Wide viewing area
- Comfortable headgear, to reduce perspiration on the welder's face whilst welding.
- 1 year warranty

Visit [esab.com](http://esab.com) for more information.

---

### Industry

- SMAW/MMA (Stick)
- MIG/MAG (GMAW)
- Manual Plasma Cutting (PAC)
- Air Carbon Arc and Cutting (CAC-A)



# A10

## Specifications

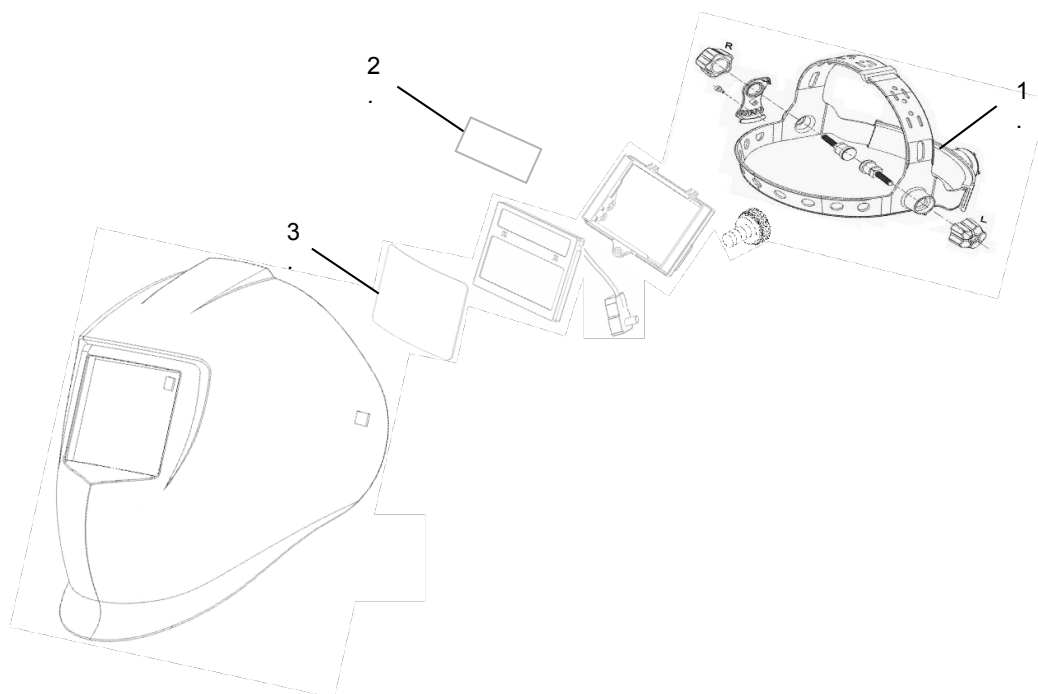
Viewing Area	90 mm x 35 mm (3.5" x 1.4")
Lens Shade	DIN 11
Power Supply	Solar Cells Assist, Lithium Batteries
Sensors	2
Switch Time	Clear - Dark: 0.1 ms / Dark - Clear: 0.1 – 0.8 sec
Classification	1/1/1/2
Standards	DIN plus, CE, EN175, ANSI Z87.1, CSA Z94.3, AS/NZS 1337.1
Weight	382 g (0.8 lb)

## Ordering Information

A10 Helmet Complete	0700 000 710
---------------------	--------------

## Wear and Spare Parts

1	Headgear A10 or A20	0700 000 721
*	Sweatband	0700 000 722
2	Inside Cover Lens A10	0700 000 711
3	Front Cover Lens	0700 000 724



ESAB / [esab.com](http://esab.com)

