

MXL MIG Torches

For light/medium-duty fabrication



This second generation of MXL torches has gone through a complete look and feel redesign. The improved performance of all models targets industrial applications. Consumables are standard Euro style.

- High quality torch for industrial use
- Ergonomic handle with knuckle joint
- Both gas and water-cooled models available
- Soft grip areas for high comfort
(MXL 341, 411w and 511w)

| Specifications | | | | |
|----------------|-------------------------------|---|--------------|---------|
| Model | Rated Output, Gas | | Wire Size | Cooling |
| 201 | 150 A @ 60% duty cycle, Mixed | 160 A @ 60% duty cycle, CO ₂ | up to 1.0 mm | Gas |
| 271 | 210 A @ 60% duty cycle, Mixed | 230 A @ 60% duty cycle, CO ₂ | up to 1.2 mm | Gas |
| 341 | 300 A @ 60% duty cycle, Mixed | 330 A @ 60% duty cycle, CO ₂ | up to 1.6 mm | Gas |
| 411W | 350 A @ 60% duty cycle, Mixed | 400 A @ 60% duty cycle, CO ₂ | up to 1.6 mm | Water |
| 511W | 450 A @ 60% duty cycle, Mixed | 500 A @ 60% duty cycle, CO ₂ | up to 1.6 mm | Water |

| Ordering Information | 3 m | 4 m | 5 m |
|-------------------------------|------------|------------|------------|
| MXL 201 with Euro Connection | 0700025220 | 0700025221 | 0700025222 |
| MXL 271 with Euro Connection | 0700025230 | 0700025231 | 0700025232 |
| MXL 341 with Euro Connection | 0700025240 | 0700025241 | 0700025242 |
| MXL 411W with Euro Connection | 0700025250 | 0700025251 | 0700025252 |
| MXL 511W with Euro Connection | 0700025260 | 0700025261 | 0700025262 |

MXL Wear Parts

| Ordering Information | 201 | 271 | 341 | 411W | 511W |
|---|------------|-----|-----|------|------|
| Liners – Steel (for steel and cored wires) | | | | | |
| 0.8 – 1.0, Blue, 3 m | 0700200085 | ■ * | ■ | ■ | ■ |
| 0.8 – 1.0, Blue, 4 m | 0700200086 | ■ * | ■ | ■ | ■ |
| 0.8 – 1.0, Blue, 5 m | 0700025800 | ■ | ■ | ■ | ■ |
| 1.0 – 1.2, Red, 3 m | 0700200087 | | ■ * | ■ * | ■ * |
| 1.0 – 1.2, Red, 4 m | 0700200088 | | ■ * | ■ * | ■ * |
| 1.0 – 1.2, Red, 5 m | 0700025801 | | ■ * | ■ * | ■ * |
| 1.2 – 1.6, Yellow, 3 m | 0700025802 | | ■ | ■ | ■ |
| 1.2 – 1.6, Yellow, 4 m | 0700025803 | | ■ | ■ | ■ |
| 1.2 – 1.6, Yellow, 5 m | 0700025804 | | ■ | ■ | ■ |
| Liners – PTFE (for steel and aluminum) | | | | | |
| 1.0 – 1.2, Red, 3 m | 0700200091 | ■ | ■ | ■ | ■ |
| 1.0 – 1.2, Red, 4 m | 0700200092 | ■ | ■ | ■ | ■ |
| 1.0 – 1.2, Red, 5 m | 0700025812 | ■ | ■ | ■ | ■ |
| 1.2 – 1.6, Yellow, 3 m | 0700025813 | | ■ | ■ | ■ |
| 1.2 – 1.6, Yellow, 4 m | 0700025814 | | ■ | ■ | ■ |
| 1.2 – 1.6, Yellow, 5 m | 0700025815 | | ■ | ■ | ■ |
| Liners – PA/Bronze (for stainless steel and aluminium) | | | | | |
| 0.8 – 1.0, Anthracite 3 m | 0700025816 | | ■ | ■ | ■ |
| 0.8 – 1.0, Anthracite 4 m | 0700025817 | | ■ | ■ | ■ |
| 0.8 – 1.0, Anthracite 5 m | 0700025818 | | ■ | ■ | ■ |
| 1.2 – 1.6, Anthracite 3 m | 0700025819 | | ■ | ■ | ■ |
| 1.2 – 1.6, Anthracite 4 m | 0700025820 | | ■ | ■ | ■ |
| 1.2 – 1.6, Anthracite 5 m | 0700025821 | | ■ | ■ | ■ |

* supplied as standard.

MXL Wear Parts

| Ordering Information | | 201 | 271 | 341 | 411W | 511W |
|----------------------|------------------------|--------------|--------------|--------------|--------------|--------------|
| Wear Parts | | | | | | |
| 1 | Gas Nozzle Conical | 0700200054 * | 0700200055 * | 0700200056 * | 0700025295 * | 0700025295 * |
| 1 | Gas Nozzle Tapered | 0700200060 | 0700200061 | 0700200062 | 0700025296 | 0700025296 |
| 1 | Gas Nozzle Cylindrical | 0700200057 | 0700200058 | 0700200059 | 0700025297 | 0700025297 |
| 1 | Gas Nozzle Tapered M6 | - | - | - | 0700025298 | 0700025298 |
| 1 | Gas Nozzle FCAW | 0700200105 | - | - | - | - |
| 2 | Tip Adaptor M6 | - | 0700200073 * | 0700200074 * | 0700025292 | 0700025292 |
| 3 | Tip Adaptor M8 | - | 0700025289 | 0700025290 | 0700025291 * | 0700025291 * |
| 4 | Nozzle Spring | 0700200078 | 0700200079 | - | - | - |
| 5 | Gas Diffusor | - | - | 0700200080 | 0700025293/4 | 0700025293/4 |

* supplied as standard.

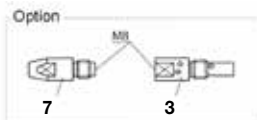
| Ordering Information | | 201 | 271 ¹⁾ / 341 ²⁾ | | | 411W / 511W | | |
|----------------------|---------------------------|--------------|---------------------------------------|---|---|-------------|---|---|
| Contact Tips | | Cu | | | | | | |
| 6 | Contact Tip M6 x 25 Ø 0.6 | 0700200063 | - | - | - | - | - | - |
| 6 | Contact Tip M6 x 25 Ø 0.8 | 0700200064 * | - | - | - | - | - | - |
| 6 | Contact Tip M6 x 25 Ø 0.9 | 0700200065 | - | - | - | - | - | - |
| 6 | Contact Tip M6 x 25 Ø 1.0 | 0700200066 | - | - | - | - | - | - |



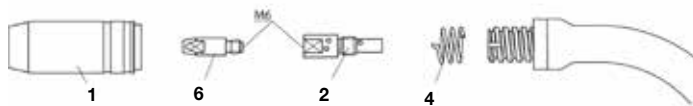
| | | Cu | CuCrZr | Alu Cu | Cu | CuCrZr | Alu Cu |
|---|---------------------------|--------------------------|------------|------------|--------------|------------|------------|
| 6 | Contact Tip M6 x 28 Ø 0.8 | 0700200068 | 0700200081 | - | 0700200068 | 0700200081 | - |
| 6 | Contact Tip M6 x 28 Ø 0.9 | 0700200069 | 0700200082 | - | 0700200069 | 0700200082 | - |
| 6 | Contact Tip M6 x 28 Ø 1.0 | 0700200070 ¹⁾ | 0700200083 | 0700025273 | 0700200070 | 0700200083 | 0700025273 |
| 6 | Contact Tip M6 x 28 Ø 1.2 | 0700200071 ²⁾ | 0700200084 | 0700025274 | 0700200071 | 0700200084 | 0700025274 |
| 7 | Contact Tip M8 x 30 Ø 0.8 | 0700025275 | 0700025280 | - | 0700025275 | 0700025280 | - |
| 7 | Contact Tip M8 x 30 Ø 0.9 | - | 0700025281 | - | - | 0700025281 | - |
| 7 | Contact Tip M8 x 30 Ø 1.0 | 0700025276 | 0700200103 | 0700025286 | 0700025276 | 0700200103 | 0700025286 |
| 7 | Contact Tip M8 x 30 Ø 1.2 | 0700025277 | 0700200104 | 0700025287 | 0700025277 * | 0700200104 | 0700025287 |
| 7 | Contact Tip M8 x 30 Ø 1.4 | - | - | - | 0700025278 | 0700025284 | - |
| 7 | Contact Tip M8 x 30 Ø 1.6 | 0700025279 | 0700025285 | 0700025288 | 0700025279 | 0700025285 | 0700025288 |

* ^{1) 2)} supplied as standard.

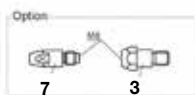
Wear and spare parts for older models please see instruction manual and contact your local ESAB representative.



MXL 271



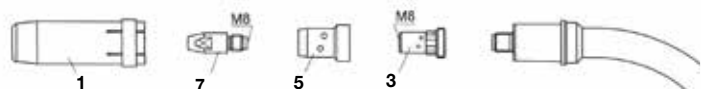
MXL 201



MXL 341



MXL 411W
MXL 511W



MXL Spare Parts

| Ordering Information | 201 | 271 | 341 | 411W | 511W |
|---------------------------------------|------------|------------|------------|----------------|------------|
| Head Insulator | | 0700200096 | | - | - |
| Swan Neck | 0700025200 | 0700025201 | 0700025202 | 0700025203 | 0700025204 |
| Handle Complete Expert | 0700025900 | | 0700025901 | 0700025902 | |
| Trigger, Yellow, 2-poles | | 0700025903 | | - | - |
| Cable Support cpl. | | 0700025950 | | 0700025971 | |
| Adaptor Nut | | 0700025951 | | - | - |
| Central Connector | | 0700200101 | | 0700025970 | |
| Quick Connector | - | - | - | - | - |
| Liner Locking Nut | | 0700200098 | | - | - |
| Cylinder Head Screw M4 x 6 | | 0700025952 | | - | - |
| O-ring 4.0 x 1.0 mm (gas nipple) | | 0700025953 | | - | - |
| Screw Expert Handle | | 0700025904 | | - | - |
| Hose Clamp w/ Ring Ø 8.7 / 9.0 / 9.5 | - | - | - | 0700025974/5/6 | |
| Clamping Ring Outer Cover | - | - | - | 0700025972 | |
| PVC-hose, 4.5 x 1.5 mm / 5 x 1.5 mm | - | - | - | 0700025993/4 | |
| Fabric Outer Cover | - | - | - | 0700025992 | |
| Cables | 3 m | 4 m | 5 m | | |
| Coaxial Cable MXL 201 | 0700025960 | 0700025961 | - | | |
| Coaxial Cable MXL 271 | 0700025962 | 0700025963 | - | | |
| Coaxial Cable MXL 341 | 0700025964 | 0700025965 | 0700025966 | | |
| Water-power Cable, Blue MXL 411W/511W | 0700025983 | 0700025984 | 0700025985 | | |
| Wire Conduit, Yellow MXL 411W/511W | 0700025986 | 0700025987 | 0700025988 | | |
| Control Cable cpl. MXL 411W/511W | 0700025989 | 0700025990 | 0700025991 | | |
| Cable Assembly MXL 411W/511W | 0700025980 | 0700025981 | 0700025982 | | |

Wear and spare parts for older models please see instruction manual and contact your local ESAB representative.

PSF Wear Parts

| Ordering Information | 260/260C | 315 | 415/415C | 515 | 420W/420CW | 520W |
|---|------------|-----|----------|-----|------------|------|
| Liners – Steel (for steel and cored wires) | | | | | | |
| 0.8 – 1.0, Blue, 3 m | 0700200085 | ■ | ■ | ■ | ■ | ■ |
| 0.8 – 1.0, Blue, 4 m | 0700200086 | ■ | ■ | ■ | ■ | ■ |
| 0.8 – 1.0, Blue, 5 m | 0700025800 | ■ | ■ | ■ | ■ | ■ |
| 1.0 – 1.2, Red, 3 m | 0700200087 | | ■ | ■ | ■ | ■ |
| 1.0 – 1.2, Red, 4 m | 0700200088 | | ■ | ■ | ■ | ■ |
| 1.0 – 1.2, Red, 5 m | 0700025801 | | ■ | ■ | ■ | ■ |
| 1.2 – 1.6, Yellow, 3 m | 0700025802 | | | ■ | ■ | ■ |
| 1.2 – 1.6, Yellow, 4 m | 0700025803 | | | ■ | ■ | ■ |
| 1.2 – 1.6, Yellow, 5 m | 0700025804 | | | ■ | ■ | ■ |
| Liners – PTFE (for steel and aluminum) | | | | | | |
| 1.0 – 1.2, Red, 3 m | 0700200091 | ■ | ■ | ■ | ■ | ■ |
| 1.0 – 1.2, Red, 4 m | 0700200092 | ■ | ■ | ■ | ■ | ■ |
| 1.0 – 1.2, Red, 5 m | 0700025812 | ■ | ■ | ■ | ■ | ■ |
| 1.2 – 1.6, Yellow, 3 m | 0700025813 | | ■ | ■ | ■ | ■ |
| 1.2 – 1.6, Yellow, 4 m | 0700025814 | | ■ | ■ | ■ | ■ |
| 1.2 – 1.6, Yellow, 5 m | 0700025815 | | ■ | ■ | ■ | ■ |
| Liners – PA/Bronze (for stainless steel and aluminium) | | | | | | |
| 0.8 – 1.0, Anthracite 3 m | 0700025816 | | ■ | ■ | ■ | ■ |
| 0.8 – 1.0, Anthracite 4 m | 0700025817 | | ■ | ■ | ■ | ■ |
| 0.8 – 1.0, Anthracite 5 m | 0700025818 | | ■ | ■ | ■ | ■ |
| 1.2 – 1.6, Anthracite 3 m | 0700025819 | | ■ | ■ | ■ | ■ |
| 1.2 – 1.6, Anthracite 4 m | 0700025820 | | ■ | ■ | ■ | ■ |
| 1.2 – 1.6, Anthracite 5 m | 0700025821 | | ■ | ■ | ■ | ■ |

* supplied as standard.

PSF MIG Torches

For medium/heavy-duty fabrication



The next generation of PSF has been completely redesigned with front-end wear parts that remain fully compatible with the time-proven heritage PSF wear parts. The modern look and feel, as well as improved performance, make this the right tool for even the most demanding industrial applications.

- 4 sizes of gas-cooled & 2 sizes of water-cooled models
- PSF 260 with rotatable neck
- PSF 520W with dual-circuit cooling system for optimal performance
- Threaded gas nozzles secures a firm fit and better heat dispersion
- Very durable wear part system with robust tip Adaptor and long tips for toughest applications
- CuCrZr contact tips for long life
- Optional remote control module on selected variants

Specifications

| Model | Rated Output, Gas | | Wire Size | Cooling |
|--------|-------------------------------|---|--------------|---------|
| 260 | 225 A @ 60% duty cycle, Mixed | 250 A @ 60% duty cycle, CO ₂ | up to 1.0 mm | Gas |
| 315 | 285 A @ 60% duty cycle, Mixed | 315 A @ 60% duty cycle, CO ₂ | up to 1.2 mm | Gas |
| 415 | 325 A @ 60% duty cycle, Mixed | 380 A @ 60% duty cycle, CO ₂ | up to 1.6 mm | Gas |
| 515 | 400 A @ 60% duty cycle, Mixed | 450 A @ 60% duty cycle, CO ₂ | up to 1.6 mm | Gas |
| 420W | 450 A @ 60% duty cycle, Mixed | 450 A @ 60% duty cycle, CO ₂ | up to 1.6 mm | Water |
| 520W * | 500 A @ 60% duty cycle, Mixed | 500 A @ 60% duty cycle, CO ₂ | up to 1.6 mm | Water |

* Dual-circuit cooling system (520w) ensure the critical front-end stays cool even under extreme conditions. Less heat means better wire feedability and fewer production stops to change wear parts.

| Ordering Information | 3 m | 4 m | 5 m |
|------------------------------------|------------|------------|------------|
| PSF 260, with Euro Connection | 0700025020 | 0700025021 | 0700025022 |
| PSF 315, with Euro Connection | 0700025030 | 0700025031 | 0700025032 |
| PSF 315 RS3, with Euro Connection | - | 0700025033 | - |
| PSF 415, with Euro Connection | 0700025040 | 0700025041 | 0700025042 |
| PSF 415 RS3, with Euro Connection | - | 0700025043 | - |
| PSF 515, with Euro Connection | 0700025050 | 0700025051 | 0700025052 |
| PSF 420W, with Euro Connection | 0700025060 | 0700025061 | 0700025062 |
| PSF 420W RS3, with Euro Connection | 0700025063 | 0700025064 | - |
| PSF 520W, with Euro Connection | 0700025070 | 0700025071 | 0700025072 |
| PSF 520W RS3, with Euro Connection | 0700025073 | 0700025074 | - |

RS3 is compatible with any ESAB machines with MA23-, MA24-, MA25-, U6- and U82 control panels as well as RobustFeed Pulse wire feeder.

PSF Wear Parts

| Ordering Information | | 260/260C | 315 | 415/415C | 515 | 420W/420CW | 520W |
|----------------------|---------------------------------|-------------------------|-------------------------|-------------------------|-------------------------|-------------------------|-------------------------|
| Wear Parts | | | | | | | |
| 1 | Gas Nozzle Standard | 0458464881 (Ø 14 mm) | 0458464882 (Ø 16 mm) | 0458464883 (Ø 17 mm) | 0458464884 (Ø 18 mm) | - | - |
| 1 | Gas Nozzle Conical | 0458465881 (Ø 12 mm) | 0458465882 (Ø 14 mm) | - | 0458465884 (Ø 15 mm) | 0458464882 (Ø 16 mm) | 0458464883 (Ø 17 mm) |
| 1 | Gas Nozzle Conical only for M6 | - | - | 0458465883 (Ø 15 mm) | - | 0458465882 (Ø 14 mm) | 0458465883 (Ø 15 mm) |
| 1 | Gas Nozzle Cylindrical/Straight | 0458470881 (Ø 16 mm) | 0458470882 (Ø 19 mm) | 0458470883 (Ø 21 mm) | 0458470884 (Ø 21 mm) | 0458470882 (Ø 19 mm) | 0458470883 (Ø 21 mm) |
| 3 | Tip Adaptor M6 | 0366314001 | | | - | 0366394001 | |
| 3 | Tip Adaptor M8 | - | | 0366395001 | | 0460819001 | |
| 4 | Insulation Bushing/Washer | 0366397001 | | 0366397002 | | 0458874001 | |

PSF Wear Parts



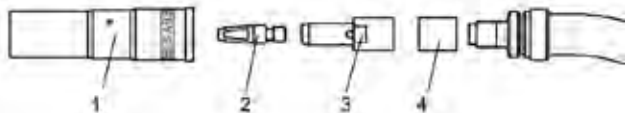
| Ordering Information | | | | 260/260C | 315 | 415/415C/420W/420CW | 515/520W |
|----------------------|----------------------------|-----------------|-----|----------|-------------|---------------------|----------|
| | Contact Tips | CO ₂ | Mix | | | | |
| 2 | Contact Tip M6 x 27 CuCrZr | 0.6 | - | | 0468500001 | | - |
| 2 | Contact Tip M6 x 27 CuCrZr | - | 0.6 | | 0468500002 | | - |
| 2 | Contact Tip M6 x 27 CuCrZr | 0.8 | - | | 0468500003* | | - |
| 2 | Contact Tip M6 x 27 CuCrZr | 0.9 | 0.8 | | 0468500004 | | - |
| 2 | Contact Tip M6 x 27 CuCrZr | 1.0 | 0.9 | | 0468500005* | | - |
| 2 | Contact Tip M6 x 27 CuCrZr | 1.2 | 1.0 | | 0468500007* | | - |
| 2 | Contact Tip M6 x 27 CuCrZr | 1.4 | 1.2 | - | | 0468500008 * | - |
| 2 | Contact Tip M6 x 27 CuCrZr | 1.6 | - | - | | 0468500009 | - |
| 2 | Contact Tip M6 x 27 CuCrZr | - | 1.6 | - | | 0468500010 | - |

| | | | | | | | |
|---|----------------------------|-----|-----|--|--|--------------|--|
| 2 | Contact Tip M8 x 37 CuCrZr | 0.8 | - | | | 0468502003 * | |
| 2 | Contact Tip M8 x 37 CuCrZr | 0.9 | 0.8 | | | 0468502004 | |
| 2 | Contact Tip M8 x 37 CuCrZr | 1.0 | 0.9 | | | 0468502005 * | |
| 2 | Contact Tip M8 x 37 CuCrZr | 1.2 | 1.0 | | | 0468502007 * | |
| 2 | Contact Tip M8 x 37 CuCrZr | 1.4 | 1.2 | | | 0468502008 * | |
| 2 | Contact Tip M8 x 37 CuCrZr | 1.6 | - | | | 0468502009 | |
| 2 | Contact Tip M8 x 37 CuCrZr | - | 1.6 | | | 0468502010 | |
| 2 | Contact Tip M8 x 37 CuCrZr | 2.0 | 2.0 | | | 0468502011 | |
| 2 | Contact Tip M8 x 37 CuCrZr | 2.4 | 2.4 | | | 0468502012 | |

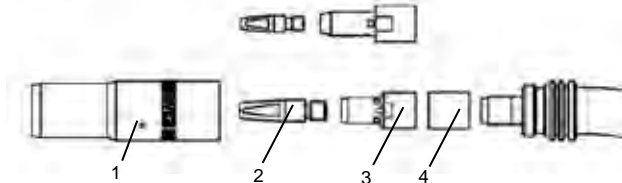
* supplied as standard.

Wear and spare parts for older models please see instruction manual and contact your local ESAB representative.

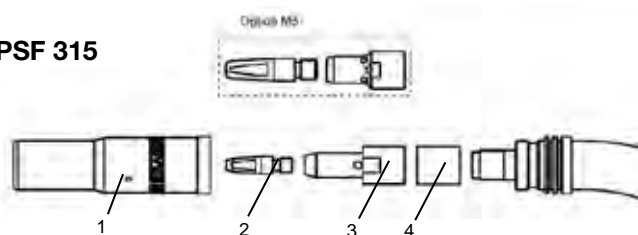
PSF 260



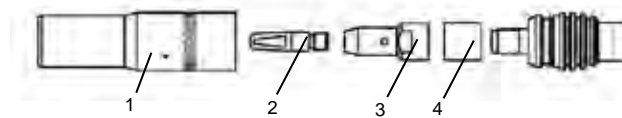
PSF 415



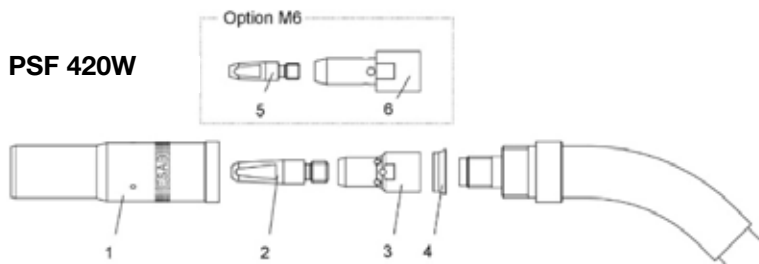
PSF 315



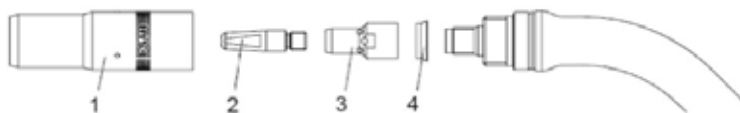
PSF 515



PSF 420W



PSF 520W



MXH Push-pull MIG Torches

Excellent feeding reliability for high demands



The gas-cooled MXH 315PP and water-cooled MXH 420WPP push-pull systems are created for RobustFeed Pulse and Aristo Feed 3004.

- Permanent, stable feeding by precise feed rolls and high-performance motor
- Easy change between a straight- or 45° rotatable swan neck
- Quick change of feeder rolls without tools
- Potentiometer for easy remote access to wire-feed settings

Specifications

| Model | Rated Output, Gas | | Wire Size | Cooling |
|--------|-------------------------------|---|--------------|---------|
| 315PP | 270 A @ 60% duty cycle, Mixed | 310 A @ 60% duty cycle, CO ₂ | up to 1.6 mm | Gas |
| 420WPP | 400A @ 60% duty cycle, Mixed | 430 A @ 60% duty cycle, CO ₂ | up to 1.6 mm | Water |

Ordering Information

| Ordering Information | 8 m | 12 m |
|------------------------------|------------|------------|
| MXH 315PP, 0° Straight neck | 0700025304 | 0700025305 |
| MXH 315PP, 45° Swan neck | - | 0700025306 |
| MXH 420WPP, 0° Straight neck | 0700025307 | 0700025308 |
| MXH 420WPP, 45° Swan neck | - | 0700025309 |

PP connection and wire feed control kit, Aristo/OrigoFeed 3004 (0459681882)

For wear & spare parts, please see separate instruction manual.

PSF Fume-extraction MIG Torches

Fume extraction torches with excellent extraction capacity



Range of fume extraction torches with a reliable and robust design, made to capture the fumes directly at the source.

- Leather protected hose
- Robust steel knuckle-joint for improved mobility
- Remote and rotatable T-piece ensures that dirt and fume particles does not interfere with critical parts in the Euro connection
- Extensive and robust PSF wear parts system including CuCrZr tips as standard

Specifications

| Model | Rated Output, Gas | | Wire Size | Cooling |
|-------|---|-------------------------------|--------------|---------|
| 260C | 250 A @ 60% duty cycle, CO ₂ | 225 A @ 60% duty cycle, Mixed | up to 1.0 mm | Gas |
| 415C | 380 A @ 60% duty cycle, CO ₂ | 325 A @ 60% duty cycle, Mixed | up to 1.6 mm | Gas |
| 420CW | 450 A @ 60% duty cycle, CO ₂ | 450 A @ 60% duty cycle, Mixed | up to 1.6 mm | Water |

Ordering Information

| Ordering Information | 3 m | 4 m | 5 m |
|-------------------------------------|------------|------------|------------|
| PSF 260C, with Euro Connection | 0700025420 | 0700025421 | 0700025422 |
| PSF 415C, with Euro Connection | 0700025440 | 0700025441 | 0700025442 |
| PSF 415C RS3, with Euro Connection | 0700025443 | 0700025444 | 0700025445 |
| PSF 420CW, with Euro Connection | 0700025450 | 0700025451 | 0700025452 |
| PSF 420CW RS3, with Euro Connection | 0700025453 | 0700025454 | 0700025455 |

RS3 is compatible with any ESAB machines with MA23-, MA24-, MA25-, U6- and U82 control panels as well as RobustFeed Pulse wire feeder.

SR-B TIG Torches

Multi-functional and ergonomic TIG welding torches



SR-B torches are dedicated to quality. The torches are designed to provide convenience and versatility. Choose between gas-cooled or water cooled, with or without gas-valve and with optional flexible head to suit your individual application.

- Gas cooled torches always measured at 60% duty cycle. Water cooled at 100% duty cycle.
- Ergonomically formed handle with toggle switch.
- Cable assembly with swivel cable support on the handle
- The torches are also available with up/down function for ESAB CAN-bus controlled machines. (requires separate adapter)

| Specifications | | | | |
|----------------|-------------------------|-------------------------|--------------|--------|
| Model | Rated Output, AC | Rated Output, DC | Electrode Ø | Cooled |
| SR-B 9 | 80 A @ 60% duty cycle | 110 A @ 60% duty cycle | up to 1.6 mm | Gas |
| SR-B 17 | 100 A @ 60% duty cycle | 140 A @ 60% duty cycle | up to 2.4 mm | Gas |
| SR-B 18 | 225 A @ 100% duty cycle | 320 A @ 100% duty cycle | up to 4.0 mm | Water |
| SR-B 20 | 160 A @ 100% duty cycle | 220 A @ 100% duty cycle | up to 3.2 mm | Water |
| SR-B 21 | 240 A @ 100% duty cycle | 340 A @ 100% duty cycle | up to 3.2 mm | Water |
| SR-B 26 | 140 A @ 60% duty cycle | 200 A @ 60% duty cycle | up to 4.0 mm | Gas |
| SR-B 26 HD | 160 A @ 60% duty cycle | 230 A @ 60% duty cycle | up to 4.0 mm | Gas |
| SR-B 400 | 315 A @ 100% duty cycle | 450 A @ 100% duty cycle | up to 4.8 mm | Water |

| Ordering Information OKC25 | 4 m | 8 m |
|----------------------------|------------|------------|
| SR-B 9V | 0700025504 | 0700025505 |
| SR-B 17V | 0700025512 | 0700025513 |

FX = Flexible head, V = Valve, HD = Heavy Duty, R = Remote

| Ordering Information OKC50 | 4 m | 8 m | 12 m | 16 m |
|----------------------------|------------|------------|------------|------------|
| SR-B 9 | 0700025500 | 0700025501 | - | - |
| SR-B 9-R | 0700025559 | - | - | - |
| SR-B 9FX | 0700025506 | 0700025507 | - | - |
| SR-B 9FX-R | - | 0700025562 | - | - |
| SR-B 17 | 0700025508 | 0700025509 | 0700025510 | 0700025511 |
| SR-B 17-R | 0700025563 | 0700025564 | - | - |
| SR-B 17FX | 0700025516 | 0700025517 | - | - |
| SR-B 17V | 0700025514 | 0700025515 | - | - |
| SR-B 26 | 0700025518 | 0700025519 | 0700025520 | 0700025521 |
| SR-B 26-R | 0700025567 | 0700025568 | - | - |
| SR-B 26FX | 0700025524 | 0700025525 | - | - |
| SR-B 26FX-R | 0700025569 | 0700025570 | - | - |
| SR-B 26HD | 0700025526 | 0700025527 | - | - |
| SR-B 26V | 0700025522 | 0700025523 | - | - |
| SR-B 26V HD | 0700025530 | 0700025531 | - | - |
| SR-B 26 FX HD | 0700025532 | 0700025533 | - | - |
| SR-B 18 | 0700025550 | 0700025551 | - | - |
| SR-B 18FX | 0700025554 | 0700025555 | - | - |
| SR-B 20 | 0700025534 | 0700025535 | - | - |
| SR-B 20FX | 0700025536 | 0700025537 | - | - |
| SR-B 21 | 0700025544 | 0700025545 | 0700025546 | 0700025547 |
| SR-B 21FX | 0700025548 | 0700025549 | - | 0700025558 |
| SR-B 400 | 0700025538 | 0700025539 | - | - |
| SR-B 400 R | 0700025575 | 0700025576 | - | - |

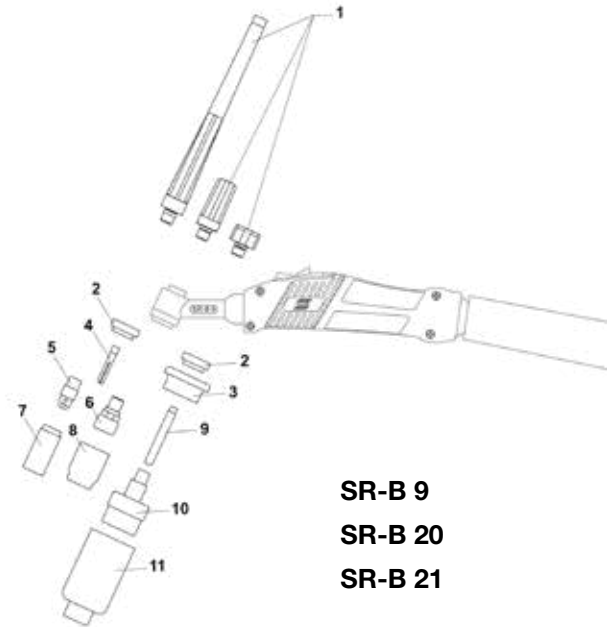
FX = Flexible head, V = Valve, HD = Heavy Duty, R = Remote

SR-B Wear Parts

Nozzles, collets, collet bodies and gas lenses for **SR-B 9**, **SR-B 20**, and **SR-B 21** torches.

| Ordering Information SR-B 9, SR-B 20, SR-B 21 | | | | |
|---|---------------|-------------------------|-------------------------|------------|
| No. | Size | Description | Part Number | |
| 1 | Long | Back cap | 0365310051 | |
| | Medium | | 0365310050 | |
| | Short | | 0365310049 | |
| 2 | | Heat shield | 0366960017 | |
| 3 | | Adaptor Jumbo gas lens | 0157123026 | |
| 4 | Ø 0.5 | Collet standard and | 0365310027 | |
| | Ø 1.0 | gas lens | 0365310028 | |
| | Ø 1.6 | SR-B 9 | 0365310029 | |
| | Ø 2.0 | | 0700025662 | |
| | Ø 2.4 | SR-B 20/21 | 0365310030 | |
| | Ø 3.0 | | 0700025663 | |
| | Ø 3.2 | | 0365310091 | |
| | 5 | Ø 0.5-1.6 | Collet body standard | 0365310037 |
| Ø 2.0-2.4 | | | 0365310039 | |
| Ø 3.0-3.2 | | | 0365310090 | |
| 6 | Ø 1.0 | Collet body w. gas lens | 0157121016 | |
| | Ø 1.6 | | 0157121017 | |
| | Ø 2.0-2.4 | | 0157121018 | |
| | Ø 3.0-3.2 | | 0157121041 | |
| 7 | Ø 6.4 (No.4) | Gas nozzle standard | 0365310044 | |
| | Ø 8.0 (No.5) | L=30 mm | 0365310045 | |
| | Ø 9.8 (No.6) | SR-B 9 | 0365310046 | |
| | Ø 11.2 (No.7) | SR-B 20/21 | 0365310047 | |
| | Ø 12.7 (No.8) | | 0365310048 | |
| - | Ø 5.0 (No.3) | Gas nozzle std long | 0700025664 | |
| | Ø 6.4 (No.4) | L=48 mm | 0700025665 | |
| | Ø 8.0 (No.5) | L=48 mm | 0700025666 | |
| | Ø 9.5 (No.6) | L=48 mm | 0700025667 | |
| | Ø 6.5 (No.4) | L=63 mm | 0700025668 | |
| | Ø 8.0 (No.5) | L=63 mm | 0700025669 | |
| | Ø 9.5 (No.6) | L=63 mm | 0700025670 | |
| | Ø 6.5 (No.4) | L=89 mm | 0700025671 | |
| | 8 | Ø 6.4 (No.4) | Gas nozzle for gas lens | 0157121032 |
| | | Ø 8.0 (No.5) | L=25.5 mm | 0157121033 |
| Ø 9.8 (No.6) | | | 0157121034 | |
| Ø 11.2 (No.7) | | | 0157121039 | |
| Ø 12.7 (No.8) | | | 0157121040 | |
| - | Ø 6.4 (No.4) | Gas nozzle for gas lens | 0700025658 | |
| | Ø 8.0 (No.5) | long L=35 mm | 0700025659 | |
| | Ø 9.8 (No.6) | L=35 mm | 0700025660 | |

Bold = standard delivery.



SR-B 9
SR-B 20
SR-B 21

| Ordering Information SR-B 9, SR-B 20, SR-B 21 | | | |
|---|----------------|-----------------------|-------------|
| No. | Size | Description | Part Number |
| | Ø 11.2 (No.7) | L=35 mm | 0700025661 |
| 9 | Ø 1.0 | Collet for Jumbo gas- | 0700025672 |
| | Ø 1.6 | lens | 0700025673 |
| | Ø 2.0-2.4 | | 0700025674 |
| | Ø 3.0-3.2 | | 0700025675 |
| 10 | Ø 1.0-1.6 | Gas lens, Jumbo | 0700025676 |
| | Ø 2.4 | | 0700025677 |
| | Ø 3.2 | | 0700025678 |
| 11 | Ø 9.8 (No.6) | Gas nozzle for Jumbo- | 0157123088 |
| | Ø 12.7 (No.8) | gas lens | 0157123089 |
| | Ø 15.9 (No.10) | L=48 mm | 0588000438 |
| | Ø 19.0 (No.12) | L=48 mm | 0157123098 |
| | Ø 24.0 | L=48 mm | 0588000437 |
| | Ø 24.0 | L=34 mm | 0700025679 |

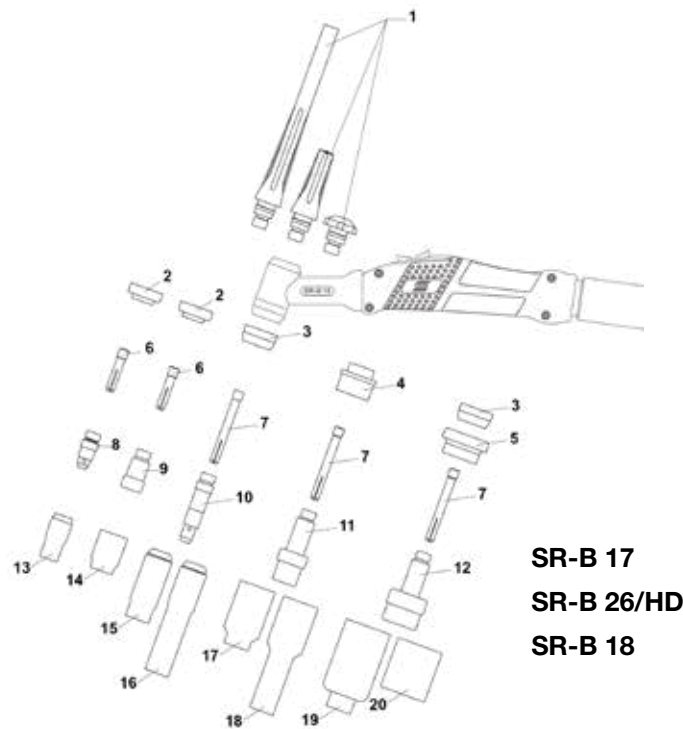
SR-B Wear Parts

Nozzles, collets, collet bodies and gas lenses for **SR-B 17**, **SR-B 26**, **SR-B 26 HD** and **SR-B 18** torches.

Ordering Information SR-B 17, SR-B 26/HD, SR-B 18

| No. | Size | Description | Part Number |
|-----------|----------------|----------------------------|-------------------|
| 1 | Long | Back cap | 0157123029 |
| | Medium | | 0588000591 |
| | Short | | 0157123028 |
| 2 | | Heat shield small | 0700025680 |
| 3 | | Heat shield | 0366960016 |
| 4 | | Heat shield gas lens | 0366960020 |
| 5 | | Heat shield large gas lens | 0366960021 |
| 6 | Ø 1.0 | Collet standard and | 0349501216 |
| | Ø 1.6 | for gas lens, short | 0349501217 |
| | Ø 2.4 | | 0349501218 |
| | Ø 3.2 | | 0349501219 |
| 7 | Ø 0.5 | Collet standard and | 0157123009 |
| | Ø 1.0 | for gas lens | 0157123010 |
| | Ø 1.6 | | 0157123011 |
| | Ø 2.0 | | 0700025681 |
| | Ø 2.4 | | 0157123012 |
| | Ø 3.0 | | 0700025682 |
| | Ø 3.2 | | 0157123013 |
| | Ø 4.0 | | 0157123014 |
| | 8 | Ø 1.0-1.6 | Collet body short |
| Ø 2.0-2.4 | | | 0700025684 |
| Ø 3.0-3.2 | | | 0700025685 |
| 9 | Ø 1.0-1.6 | Collet body with gas | 0700025686 |
| | Ø 2.4 | lens, short | 0700025687 |
| | Ø 3.2 | | 0700025688 |
| 10 | Ø 0.5-1.6 | Collet body standard | 0157123016 |
| | Ø 2.0-2.4 | | 0157123017 |
| | Ø 3.0-3.2 | | 0157123018 |
| | Ø 4.0 | | 0157123019 |
| 11 | Ø 1.0 | Collet body with | 0157123021 |
| | Ø 1.6 | gas lens, standard | 0157123022 |
| | Ø 2.0-2.4 | | 0157123023 |
| | Ø 3.0-3.2 | | 0157123024 |
| 12 | Ø 1.0 | Collet body with extra | 0157123083 |
| | Ø 1.6 | large gas lens | 0157123084 |
| | Ø 2.0-2.4 | | 0157123085 |
| | Ø 3.0-3.2 | | 0157123086 |
| 13 | Ø 6.4 (No.4) | Gas nozzle | 0365310044 |
| | Ø 8.0 (No.5) | L=30 mm | 0365310045 |
| | Ø 9.8 (No.6) | | 0365310046 |
| | Ø 11.2 (No.7) | | 0365310047 |
| | Ø 12.7 (No.8) | | 0365310048 |
| 14 | Ø 15.9 (No.10) | | 0588000440 |
| | Ø 6.4 (No.4) | Gas nozzle for | 0157121032 |
| | Ø 8.0 (No.5) | gas lens, short | 0157121033 |
| | Ø 9.8 (No.6) | L=25.5 mm | 0157121034 |
| | Ø 11.2 (No.7) | | 0157121039 |

Bold = standard delivery.



SR-B 17
SR-B 26/HD
SR-B 18

Ordering Information SR-B 17, SR-B 26/HD, SR-B 18

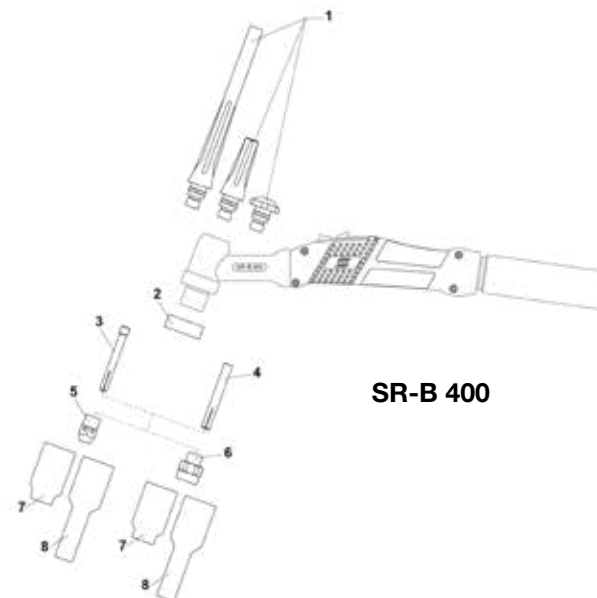
| No. | Size | Description | Part Number |
|-----|----------------|---------------------|-------------------|
| | Ø 12.7 (No.8) | | 0157121040 |
| 15 | Ø 6.4 (No.4) | Gas nozzle standard | 0157123052 |
| | Ø 8.0 (No.5) | L=47 mm | 0157123053 |
| | Ø 9.8 (No.6) | | 0157123054 |
| | Ø 11.2 (No.7) | | 0157123055 |
| | Ø 12.7 (No.8) | | 0157123056 |
| | Ø 15.9 (No.10) | | 0588000442 |
| | Ø 19 (No.10) | | 0588000441 |
| 16 | Ø 6.4 (No.4) | Gas nozzle standard | 0700025689 |
| | Ø 8.0 (No.5) | L=76 mm | 0700025690 |
| | Ø 9.8 (No.6) | | 0700025691 |
| | Ø 11.2 (No.7) | | 0700025692 |
| 17 | Ø 6.4 (No.4) | Gas nozzle for | 0157123057 |
| | Ø 8.0 (No.5) | gas lens | 0157123058 |
| | Ø 9.8 (No.6) | L=42 mm | 0157123059 |
| | Ø 11.2 (No.7) | | 0157123060 |
| | Ø 12.7 (No.8) | | 0157123061 |
| | Ø 17.5 | | 0588000439 |
| 18 | Ø 6.4 (No.4) | Gas nozzle for | 0700025693 |
| | Ø 8.0 (No.5) | gas lens | 0700025694 |
| | Ø 9.8 (No.6) | L=76 mm | 0700025695 |
| | Ø 11.2 (No.7) | | 0700025696 |
| | Ø 12.7 (No.8) | | 0700025697 |
| 19 | Ø 9.8 (No.6) | Gas nozzle for gas | 0157123088 |
| | Ø 12.5 (No.8) | lens, large | 0157123089 |
| | Ø 15.9 (No.10) | L=48mm | 0588000438 |
| | Ø 19 (No.12) | | 0157123098 |
| | Ø 24 | | 0588000437 |
| 20 | Ø 24 | Gas nozzle for gas | 0700025679 |
| | | lens, short | |
| | | L=34 mm | |

SR-B Wear Parts

Nozzles, collets, collet bodies and gas lenses for **SR-B 400** torches.

| Ordering Information SR-B 400 | | | |
|-------------------------------|---------------|--|-------------------|
| No. | Size | Description | Part Number |
| 1 | Long | Back cap | 0157123029 |
| | Medium | | 0588000591 |
| | Short | | 0157123028 |
| 2 | | Heat shield | 0366960018 |
| 3 | ∅ 1.0 | Collet standard and for gas lens | 0157123010 |
| | ∅ 1.6 | | 0157123011 |
| | ∅ 2.4 | | 0157123012 |
| | ∅ 3.2 | | 0157123013 |
| | ∅ 4.0 | | 0157123014 |
| | ∅ 4.8 | | |
| 4 | ∅ 2.4 | Collet, heavy duty | 0157123077 |
| | ∅ 3.2 | | 0157123078 |
| | ∅ 4.0 | | 0157123079 |
| | ∅ 4.8 | | 0157123074 |
| 5 | ∅ 1.0-3.2 | Collet body standard | 0157123081 |
| | ∅ 3.2-4.8 | | 0157123082 |
| 6 | ∅ 1.0 | Collet body with gas- lens | 0157123091 |
| | ∅ 1.6 | | 0157123092 |
| | ∅ 2.4 | | 0157123093 |
| | ∅ 3.2 | | 0157123094 |
| | ∅ 4.0 | | 0157123095 |
| | ∅ 4.8 | | 0157123075 |
| 7 | ∅ 6.4 (No.4) | Gas nozzle Standard and for gas lens L=42 mm | 0157123057 |
| | ∅ 8.0 (No.5) | | 0157123058 |
| | ∅ 9.8 (No.6) | | 0157123059 |
| | ∅ 11.2 (No.7) | | 0157123060 |
| | ∅ 12.7 (No.8) | | 0157123061 |
| | ∅ 17.5 | | 0588000439 |
| 8 | ∅ 6.4 (No.4) | Gas nozzle Standard and for gas lens L=76 mm | 0700025693 |
| | ∅ 8.0 (No.5) | | 0700025694 |
| | ∅ 9.8 (No.6) | | 0700025695 |
| | ∅ 11.2 (No.7) | | 0700025696 |
| | ∅ 12.7 (No.8) | | 0700025697 |
| | | | |

Bold = standard delivery.



TXH™ to SR-B Replacement List

| TXH Range | | SR-B Range | |
|---------------------------------|------------|--------------------------|--|
| TXH 121V OKC25, 4 m | 0700300523 | SR-B 9V OKC25G 3/8, 4 m | 0700025504 |
| TXH 121 OKC50, 4 m | 0700300524 | SR-B 9 OKC50, 4 m | 0700025500 |
| TXH 121F OKC25, 4 m | 0700300525 | SR-B 9FX OKC50, 4 m | Need OKC50->25 adapter, 0590046800 0700025506 |
| TXH 121F OKC50, 4 m | 0700300526 | SR-B 9FX OKC50, 4 m | 0700025506 |
| TXH 121 OKC50, 8 m | 0700300529 | SR-B 9 OKC50, 8 m | 0700025501 |
| TXH 121F OKC25, 8 m | 0700300530 | SR-B 9FX OKC50, 8 m | Need OKC50->25 adapter, 0590046800 0700025507 |
| TXH 121F OKC50, 8 m | 0700300531 | SR-B 9FX OKC50, 8 m | 0700025507 |
| TXH 151 OKC25, 4 m | 0700300536 | SR-B 17 OKC50, 4 m | Need OKC50->25 adapter, 0590046800 0700025508 |
| TXH 151V OKC25, 4 m | 0700300537 | SR-B 17V OKC25 3/8, 4 m | 0700025512 |
| TXH 151 OKC50 4 m | 0700300538 | SR-B 17 OKC50, 4 m | 0700025508 |
| TXH 151V OKC50, 4 m | 0700300539 | SR-B 17V OKC50 3/8, 4 m | 0700025514 |
| TXH 151F OKC25, 4 m | 0700300540 | SR-B 17FX OKC50, 4 m | Need OKC50->25 adapter, 0590046800 0700025516 |
| TXH 151F OKC50, 4 m | 0700300541 | SR-B 17FX OKC50, 4 m | 0700025516 |
| TXH 151 OKC25, 8 m | 0700300542 | SR-B 17 OKC50, 8 m | Need OKC50->25 adapter, 0590046800 0700025509 |
| TXH 151 OKC50, 8 m | 0700300544 | SR-B 17 OKC50, 8 m | 0700025509 |
| TXH 151V OKC50, 8 m | 0700300545 | SR-B 17V OKC50 3/8, 8 m | 0700025515 |
| TXH 151F OKC25, 8 m | 0700300546 | SR-B 17FX OKC50, 8 m | Need OKC50->25 adapter, 0590046800 0700025517 |
| TXH 151F OKC50, 8 m | 0700300547 | SR-B 17FX OKC50, 8 m | 0700025517 |
| TXH 201 OKC50, 4 m | 0700300552 | SR-B 26 OKC50, 4 m | 0700025518 |
| TXH 201V OKC50, 4 m | 0700300553 | SR-B 26V OKC50 3/8, 4 m | 0700025522 |
| TXH 201F OKC50, 4 m | 0700300554 | SR-B 26FX OKC50, 4 m | 0700025524 |
| TXH 201 OKC50, 8 m | 0700300555 | SR-B 26 OKC50, 8 m | 0700025519 |
| TXH 201V OKC50, 8 m | 0700300556 | SR-B 26V OKC50 3/8, 8 m | 0700025523 |
| TXH 201F, OKC50, 8 m | 0700300557 | SR-B 26FX OKC50, 8 m | 0700025525 |
| TXH 201 OKC25, 4 m | 0700300558 | SR-B 26 OKC50, 4 m | Need OKC50->25 adapter, 0590046800 0700025518 |
| TXH 201F OKC25, 4 m | 0700300559 | SR-B 26FX OKC50, 4 m | Need OKC50->25 adapter, 0590046800 0700025524 |
| TXH 201 OKC25, 8 m | 0700300560 | SR-B 26 OKC50, 8 m | Need OKC50->25 adapter, 0590046800 0700025519 |
| TXH 251w OKC50, 4 m | 0700300561 | SR-B 20 OKC50, 4 m | 0700025534 |
| TXH 251wF OKC50, 4 m | 0700300562 | SR-B 20FX OKC50, 4 m | 0700025536 |
| TXH 251w OKC50, 8 m | 0700300563 | SR-B 20 OKC50, 8 m | 0700025535 |
| TXH 251wF OKC50, 8 m | 0700300564 | SR-B 20FX OKC50, 8 m | 0700025537 |
| TXH 401w OKC50, 4 m | 0700300565 | SR-B 400 OKC50, 4 m | 0700025538 |
| TXH 401w HD OKC50, 4 m | 0700300566 | SR-B 400 OKC50, 4 m | 0700025538 |
| TXH 401w OKC50, 8 m | 0700300567 | SR-B 400 OKC50, 8 m | 0700025539 |
| TXH 401w HD OKC50, 8 m | 0700300568 | SR-B 400 OKC50, 8 m | 0700025539 |
| TXH 121r OKC50, 4 m | 0700300620 | SR-B 9-R OKC50, 4 m | 0700025559 |
| TXH 121Fr OKC50, 8 m | 0700300623 | SR-B 9FX-R OKC50, 8 m | 0700025562 |
| TXH 151r OKC50, 4 m | 0700300624 | SR-B 17-R OKC50, 4 m | 0700025563 |
| TXH 151r OKC50, 8 m | 0700300626 | SR-B 17-R OKC50, 8 m | 0700025564 |
| TXH 201r OKC50, 4 m | 0700300628 | SR-B 26-R OKC50, 4 m | 0700025567 |
| TXH 201Fr OKC50, 4 m | 0700300629 | SR-B 26FX-R OKC50, 4 m | 0700025569 |
| TXH 201r OKC50, 8 m | 0700300630 | SR-B 26-R OKC50, 8 m | 0700025568 |
| TXH 201Fr OKC50, 8 m | 0700300631 | SR-B 26FX-R OKC50, 8 m | 0700025570 |
| TXH 251wr OKC50, 4 m | 0700300632 | SR-B 21-R OKC50, 4 m | 0700025571 |
| TXH 251wFr OKC50, 4 m | 0700300633 | SR-B 21FX-R OKC50, 4 m | 0700025573 |
| TXH 251wr OKC50, 4 m | 0700300634 | SR-B 21-R OKC50, 8 m | 0700025572 |
| TXH 251wFr OKC50, 8 m | 0700300635 | SR-B 21FX-R OKC50, 8 m | 0700025574 |
| TXH 401wr OKC50, 4 m | 0700300636 | SR-B 400-R OKC50, 4 m | 0700025575 |
| TXH 401wr OKC50, 8 m | 0700300638 | SR-B 400-R, OKC50, 8 m | 0700025576 |
| TXH 251W, 8 m Wheel Remote | 0700300659 | SR-B 21R, 8 m Heliarc | Only Heliarc machines 0700025577 |
| TXH 401W, 8 m Wheel Remote | 0700300660 | SR-B 400-R, 8 m Heliarc | Only Heliarc machines 0700025579 |
| TXH 251W, 8 m Flex Wheel Remote | 0700300663 | SR-B 21FX-R, 8 m Heliarc | Only Heliarc machines 0700025578 |
| TXH 252w, 4 m | 0700300855 | SR-B 21, OKC50, 4 m | 0700025544 |
| TXH 252w, 8 m | 0700300856 | SR-B 21, OKC50, 8 m | 0700025545 |
| TXH 202, 4 m (Rebel 8-pin) | 0700300857 | SR-B 26, 4 m Rebel | Only Rebel's with solenoid valve 0700025580 |