

## Welding Blankets

### Fibreglass Welding Blanket • 0.75mm Thickness

- Perfect for any garage or workshop
- Can be used as a thermal wrap for exhausts or other hot areas

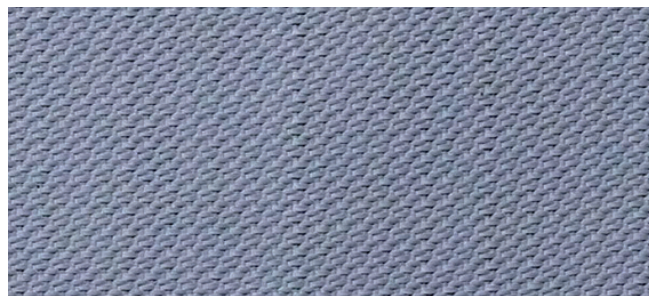


| Order Code    | Description                   | Pack Qty |
|---------------|-------------------------------|----------|
| <b>WB0551</b> | Fibreglass (550°C) 1x1m       | 1        |
| <b>WB0552</b> | Fibreglass (550°C) 1x2m       | 1        |
| <b>WB0553</b> | Fibreglass (550°C) 2x2m       | 1        |
| <b>WB0554</b> | Fibreglass (550°C) 2x3m       | 1        |
| <b>WB0557</b> | Fibreglass (550°C) 1x25m Roll | 1        |

### Fibreglass Welding Blanket

#### • PU Coated • 0.7mm Thickness

- Perfect for any garage or workshop
- PU coated to resist grease and liquids



| Order Code      | Description                             | Pack Qty |
|-----------------|---|----------|
| <b>WB0551PU</b> | Fibreglass PU Coated (550°C) 1x1m       | 1        |
| <b>WB0552PU</b> | Fibreglass PU Coated (550°C) 1x2m       | 1        |
| <b>WB0553PU</b> | Fibreglass PU Coated (550°C) 2x2m       | 1        |
| <b>WB0554PU</b> | Fibreglass PU Coated (550°C) 2x3m       | 1        |
| <b>WB0557PU</b> | Fibreglass PU Coated (550°C) 1x25m Roll | 1        |

### Fibreglass Welding Blanket, Black

#### • Vermiculate Weight 1020g/m<sup>2</sup>

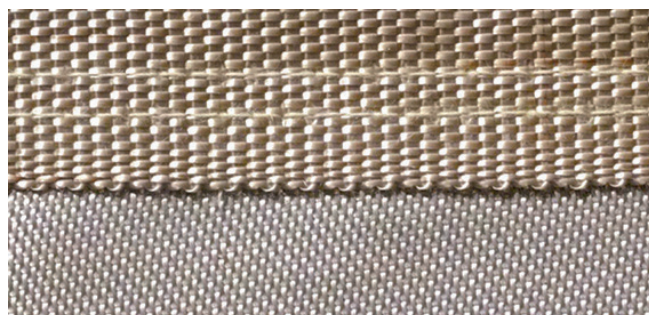
- Heavier fabric weight 1020g/m<sup>2</sup>
- Vermiculate coated for higher temperature and better abrasion resistance



| Order Code    | Description                                     | Pack Qty |
|---------------|---|----------|
| <b>WB0851</b> | Fibreglass Black Vermiculate (750°C) 1x1m       | 1        |
| <b>WB0852</b> | Fibreglass Black Vermiculate (750°C) 1x2m       | 1        |
| <b>WB0853</b> | Fibreglass Black Vermiculate (750°C) 2x2m       | 1        |
| <b>WB0854</b> | Fibreglass Black Vermiculate (750°C) 2x3m       | 1        |
| <b>WB0857</b> | Fibreglass Black Vermiculate (750°C) 1x25m Roll | 1        |

### Silica Welding Blanket • 0.6mm Thickness

- High silica blankets are very soft and flexible making drapeability easy and ideal for automotive repair applications
- The material is far less likely to mark interior and exterior surfaces
- Superb to hold/insulate hot components or isolate hot areas up to 900°C to allow them to cool



| Order Code    | Description                | Pack Qty |
|---------------|----------------------------|----------|
| <b>WB1301</b> | Silica (1100°C) 1x1m       | 1        |
| <b>WB1302</b> | Silica (1100°C) 1x2m       | 1        |
| <b>WB1303</b> | Silica (1100°C) 2x2m       | 1        |
| <b>WB1304</b> | Silica (1100°C) 2x3m       | 1        |
| <b>WB1307</b> | Silica (1100°C) 1x25m Roll | 1        |