

Professional desktop thermal printers

TD Series

www.brother.co.uk



Versatile, high-resolution desktop printers

Brother's range of TD professional thermal printers allows you to print high quality labels on demand. Printing labels up to 4 inches in width, using direct thermal and thermal transfer print technology, they fit the requirements of a large range of market applications.



TD professional desktop label printers



Seamless Integration

Brother's high specification desktop label printers bring you improved operational efficiency with easy to use, high speed and continuous label printing. Combined with seamless integration and modular design, print from virtually anywhere in the workplace. Supporting a variety of printer command languages, including ZPL II emulation, the TD printers allow you to integrate into existing legacy systems.



Up to 2 inch - Direct Thermal



TD-2020



TD-2120N



TD-2130N

Up to 4 inch - Direct Thermal



TD-4210D



TD-4410D



TD-4420DN



TD-4520DN



TD-4550DNWB

Up to 4 inch - Thermal Transfer / Direct Thermal



TD-4420TN



TD-4520TN



TD-4650TNWB



TD-4750TNWB



TD-4650TNWBR



TD-4750TNWBR

Professional label printing



Healthcare, medical and laboratory



Labels are often required to display a considerable amount of important information, so you need a printer that can put it all together efficiently, with consistent, high-quality results.

The TD Series of desktop label printers offers direct thermal and thermal transfer high speed printing, at up to 300 dpi resolution. Options include a peeler or automatic cutter, for producing continuous media to your required length on demand. The software supports barcode printing, embellish font programming for highlighting specific words, and also allows you to import graphics and date formats for a truly personalised solution.

With the strict regulations on the tracking of patient specimens and other items within the healthcare industry, clear, high quality labelling is essential to maintain safety and traceability.

A selection of the thermal transfer TD models offer RFID capability, enabling healthcare organisations to implement paper-free patient identification - improving efficiency and reducing human error.

Applications include:

- Appointment cards
- Admission labels
- Specimen, phlebotomy and pathology labels
- Blood bag labels
- Laboratory labels
- Microbiology labels
- Dosage/drug bag labels
- Wristbands.

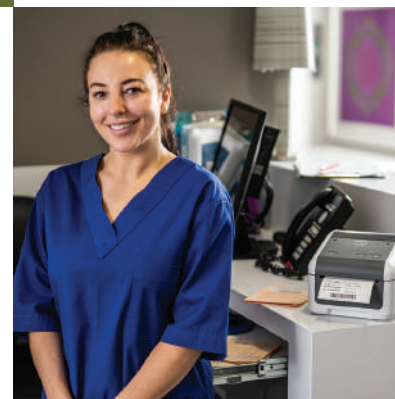
Printing Technology

Direct Thermal

Low-cost, high-volume labels can be created through this process, which uses a heat-sensitive coating and thermal print head, meaning traditional printing ribbons and ink are not required. Ideal for shorter term and less permanent labelling uses.

Thermal Transfer

Crisp, durable printing is achieved through a process in which the ink is absorbed into the label, making it ideal for applications that require robust, harder-wearing and/or RFID labels.



Warehousing and logistics



Efficient warehousing operation and worker productivity are critical to the success of many companies. With the most common sizes of shipping labels available and the ability to create custom sized labels there are many uses for these models in the warehouse.

Applications include:

- Shipping labels
- Carton labels
- Location labels
- Pallet identification labels
- Quality control labels
- Compliance labels.

Retail

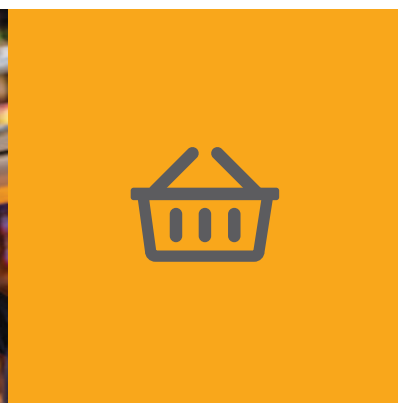


Easy to read labels are essential for consumers to help make informed decisions prior to a potential purchase. The high print resolution and high quality labels used in this range ensure that every output printed looks professional, offering sharp text, logos and barcodes with a high contrast to ensure faultless scanning at the checkout.

Futhermore, printing labels with RFID tags enables retailers to streamline inventory management and asset tracking while improving security.

Applications include:

- Pricing labels
- Barcode labels
- Pre-packaged food ingredient and allergen labels
- Nutrition information labels
- Shelf-edge labels
- Sale/mark-down/discount pricing labels.



TD-2000 Range

brief summary

TD-2020

TD-2120N

TD-2130N

2 Inch

Printing

Print technology	Direct thermal		
Print speed	152mm/sec		
Resolution	203dpi		300dpi
Max print width	56mm		
Min print length	6mm		
Max print length	1000mm		
Media sensor type	Gap (transmissive), Bar (reflective)		
Media sensor location	Gap (fixed), Reflective (adjustable)		
Tear off release mode	●	●	●

Connectivity

USB	●	●	●
Serial (via adapter)	●	●	●
Wired LAN		●	●
USB Host Port		●	●
Wireless LAN (option)		●	●

General

Dimensions (mm)	110 (w) x 215 (d) x 172 (h)		
Weight	1.32kg		1.34kg
Control panel	3 button 2 LED		
LCD*		●	
Operating system support	Windows XP/Vista 7/8/10/11, Linux	Windows XP/ Vista 7/8/10/11 Windows Server 2008/2008R2 Windows Server 2012/2012R2, Linux	
Supported commands	P-touch Template, ESC/P, Raster, ZPL II emulation		

* Via Touch Display Unit (optional)

TD-2000 Accessories and supplies

Brother has designed and engineered a wide range of accessories to help customise the solution to meet your specific labelling requirements. Brother accessories help users equip their device to cope with the specific requirements of use.

Power and additional options

PA-WI-001

Wi-Fi Interface
TD-2120N
TD-2130N



PA-TDU-001

Touch Display Unit
TD-2120N
TD-2130N



PA-BB-001

Battery Charging Unit*
TD-2120N
TD-2130N



* Requires PA-BT-4000LI

PA-BT-4000LI

Li-ion rechargeable Battery*
TD-2120N
TD-2130N



* Requires PA-BB-001

PA-LP-001

Label Peeler
TD-2120N
TD-2130N



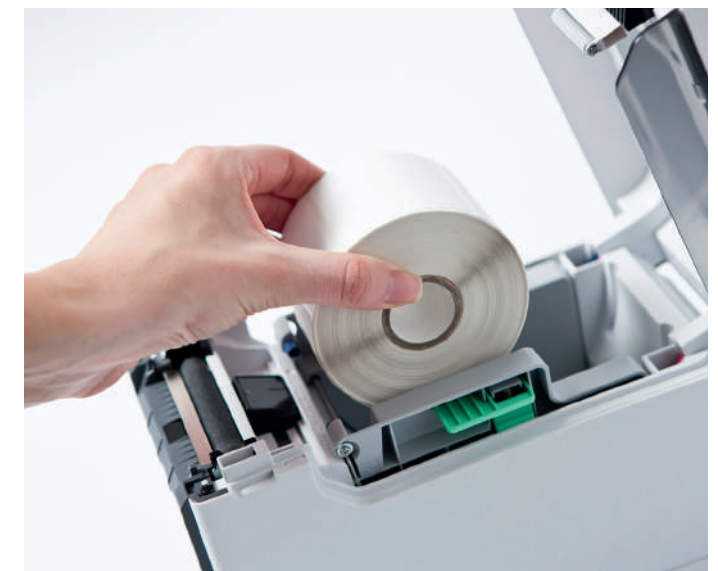
Desktop printing supplies TD-2000



Supply type	Part code	Description	Size	Quantity	Rolls/Box
Receipt	BDL-7J000058-102	Continuous receipt roll	58mm x 101.6m	n/a	8
Labels	BDE-1J026051-102	Die-cut labels roll	51mm x 26mm	1,900 labels	16

Custom label requirements

Should you not be able to find the appropriate label size in our portfolio, then do not hesitate to contact us. We are happy to listen to your needs and see if we can develop the label that meets your requirements.



TD-4D Range

brief summary

TD-4210D TD-4410D TD-4420DN TD-4520DN TD-4550DNWB

4 Inch

Printing

Print technology	Direct thermal				
Print speed	127mm/sec	203mm/sec		152mm/sec	
Resolution	203dpi			300dpi	
Max print width	104.1mm			108.4mm	
Min print length	Continuous: 6.4mm, Peeler: 12.7mm, Cutter: 20mm, Tear: 27mm				
Max print length	3000mm				
Media sensor type	Gap (transmissive), Bar (reflective)				
Media sensor location	Gap (fixed), Reflective (adjustable)				
Tear off release mode	Standard: Continuous, Tear off Optional: Peeler, Cutter				

Connectivity

USB	●	●	●	●	●
Serial	●	●	●	●	●
Wired LAN	—	—	●	●	●
USB Host Port	—	—	—	—	●
Bluetooth	—	—	—	—	●
Wireless LAN	—	—	—	—	●

General

Dimensions (mm)	180(w) x 224(d) x 155(h)				
Weight	2.08kg				
Control panel	3 button 3 LED			7 button 3 LED	
LCD	—				●
Operating system support	Windows 7/8/8.1/10/11, Linux		Windows 7/8/8.1/10/11, Windows Server 2008/2008R2/2012/2012R2/2016 Linux		
Supported commands	P-touch Template, ESC/P, Raster, ZPL2, EPL2, DPL, CPCL emulation				

TD-4D Accessories and consumable supplies

Brother has designed and engineered a wide range of accessories to help customise your labelling solution. Brother accessories help users equip their device to cope with the specific requirements of use.

TD-4D Additional options

PA-LP-002 Label peeler	PA-CU-001 Cutter	PA-HU2-001 Thermal print head (203dpi)	PA-HU3-001 Thermal print head (300dpi)	PA-PR2-001 Platen roller (203dpi)	PA-PR3-001 Platen roller (300dpi)	TD4HOLDERU1 Tablet holder
TD-4410D TD-4420DN TD-4520DN TD-4550DNWB	TD-4410D TD-4420DN TD-4520DN TD-4550DNWB	TD-4410D TD-4420DN	TD-4520DN TD-4550DNWB	TD-4410D TD-4420DN	TD-4520DN TD-4550DNWB	TD-4420DN TD-4520DN TD-4550DNWB
						

Desktop printing supplies TD-4D



Supply type	Part code	Description	Size	Quantity	Rolls/Box
Receipt	BDL-7J000102-058	Continuous receipt roll	101.6mm x 32.2m	n/a	20
	BDL-7J000076-066	Continuous receipt roll	76mm x 42m	n/a	8
	BDL-7J000058-102	Continuous receipt roll	58mm x 101.6m	n/a	8
	BDL-7J000058-040	Continuous receipt roll	58mm x 13.8m	n/a	24
Labels	BDE-1J000102-102	Continuous label roll	102mm x 58m	n/a	8
	BDE-1J050102-102	Die-cut label roll	102mm x 50mm	1,050 labels	8
	BDE-1J152102-058	Die-cut label roll	102mm x 152mm	85 labels	20
	BDE-1J152102-102	Die-cut label roll	102mm x 152mm	350 labels	8
	BDE-1J026076-102	Die-cut label roll	76mm x 44mm	1,900 labels	8
	BDE-1J044076-066	Die-cut label roll	76mm x 44mm	400 labels	8
	BDE-1J026051-102	Die-cut label roll	51mm x 26mm	1,900 labels	16
	BDE-1J026051-060	Die-cut label roll	51mm x 26mm	500 labels	12



TD-4T Range

brief summary

TD-4420TN	TD-4520TN	TD-4650TNWB	TD-4750TNWB	TD-4650TNWBR	TD-4750TNWBR
4 Inch					

Printing

Print technology	Thermal Transfer/Direct Thermal					
Print speed	152mm/sec	127mm/sec	203.2mm/sec	152.4mm/sec	203.2mm/sec	152.4mm/sec
Resolution	203dpi	300dpi	203dpi	300dpi	203dpi	300dpi
Max print width	108mm	105.7mm	108mm	105.7mm	108mm	105.7mm
Min print length	Peeler: 25.4mm, Cutter: 25.4mm Tear: 50mm		Continuous: 5mm Tear mode: Media width less than 2 inch: 25.4 mm Media width greater than 2 inch: 50 mm Peeler mode: 25.4mm Cutter mode: 25.4mm			
Max print length	25,400mm	11,430mm	25,400mm	11,430mm	25,400mm	11,430mm
Media sensor type	Gap (transmissive), Bar (reflective)					
Media sensor location	Gap (fixed), Reflective (adjustable)					
Tear off release mode	Standard: Continuous, Tear off Optional: Peeler, Cutter				Standard: Continuous, tear off	

Connectivity

USB	●	●	●	●	●	●
Serial	●	●	●	●	●	●
Wired LAN	●	●	●	●	●	●
USB Host Port	●	●	●	●	●	●
Bluetooth	—	—	●	●	●	●
Wireless LAN	—	—	●	●	●	●

Connectivity

Dimensions (mm)	204(w) x 280(d) x 178(h)	219(w) x 284(d) x 191(h)
Weight	2.5kg	2.5kg
Control panel	1 button 1 LED with 3 colours	1 LED with 3 colors. 6 buttons for Navigation, MENU and FEED/PAUSE/SELECT
LCD	—	● ● ● ●
Operating system support	Windows 7/8/8.1/10/11 Windows Server 2008/2008R2/2012/2012R2/2016 OS X 10.10.x,10.11.x macOS 10.12.x, 10.13.x, 10.14.x, 11 Linux	Windows 7 Windows 8 Windows 8.1 Windows 10 Windows 11 Windows Server 2008, 2008 R2, 2012, 2012 R2, 2016, 2019 Linux Mac OS v10.6-11
Supported commands	FBPL-EZD (EPL2, ZPL2, DPL) emulation	

Desktop printing supplies

TD-4T



TD-4T Additional Options

PA-RH-001

External Roll Holder

TD-4420TN
TD-4520TN
TD-4650TNWB
TD-4750TNWB
TD-4650TNWBR
TD-4750TNWBR



PA-CU-003

Cutter

TD-4420TN
TD-4520TN
TD-4650TNWB
TD-4750TNWB
TD-4650TNWBR*
TD-4750TNWBR*



PA-LP-004

Peeler

TD-4420TN
TD-4520TN
TD-4650TNWB
TD-4750TNWB
TD-4650TNWBR*
TD-4750TNWBR*



* Not recommended for use with RFID tags

Supply type	Part code	Description	Size	Quantity	Rolls/Box
Labels	BUS-1J074102-121	Uncoated thermal transfer die cut labels	102mm x 74mm	1,100 labels	6
	BUS-1J150102-121	Uncoated thermal transfer die cut labels	102mm x 150mm	550 labels	6
	BCS-1J074102-121	Coated thermal transfer die cut labels	102mm x 74mm	1,100 labels	6
	BCS-1J150102-121	Coated thermal transfer die cut labels	102mm x 150mm	550 labels	6
Ribbons	BWS-1D300-060	Standard wax ribbon	60mm x 300m	n/a	12
	BWS-1D300-080	Standard wax ribbon	80mm x 300m	n/a	12
	BWS-1D300-110	Standard wax ribbon	110mm x 300m	n/a	12
	BWP-1D300-060	Premium wax ribbon	60mm x 300m	n/a	12
	BWP-1D300-080	Premium wax ribbon	80mm x 300m	n/a	12
	BWP-1D300-110	Premium wax ribbon	110mm x 300m	n/a	12
	BSS-1D300-060	Standard wax/resin ribbon	60mm x 300m	n/a	12
	BSS-1D300-080	Standard wax/resin ribbon	80mm x 300m	n/a	12
	BSS-1D300-110	Standard wax/resin ribbon	110mm x 300m	n/a	12
	BSP-1D300-060	Premium wax/resin ribbon	60mm x 300m	n/a	12
	BSP-1D300-080	Premium wax/resin ribbon	80mm x 300m	n/a	12
	BSP-1D300-110	Premium wax/resin ribbon	110mm x 300m	n/a	12
	BRS-1D300-060	Standard resin ribbon	60mm x 300m	n/a	12
	BRS-1D300-080	Standard resin ribbon	80mm x 300m	n/a	12
	BRS-1D300-110	Standard resin ribbon	110mm x 300m	n/a	12
	BRP-1D300-060	Premium resin ribbon	60mm x 300m	n/a	12
BRP-1D300-080	Premium resin ribbon	80mm x 300m	n/a	12	
BRP-1D300-110	Premium resin ribbon	110mm x 300m	n/a	12	

For additional consumable options please contact your local Brother office.

With label design apps for desktop PCs and mobile devices, and Software Development Kits (SDKs) to integrate the TD range into your own applications, you can choose the best option for your label printing needs. Brother provides all the necessary tools required for software developers to integrate printing into their applications. Printer drivers are available for Windows OS, and SDKs can be provided to support Windows Mobile,* Android and iOS operating systems.

Software, support and features



P-touch Editor

Supplied as standard, you can create your own custom labels with pixel precision by using this powerful software solution. With features such as support for over 15 barcode protocols, advanced image dithering to print high quality grayscale images, and the ability to link to data contained in Excel spreadsheets for batch printing of labels, any label design is possible.

Crop Function

Built into the Windows driver, this function helps take away the inconvenience of using A4 sheets of labels in your standard printer. This clever feature automatically scans through the document and where a barcode is present it extracts shipping or product labels one at a time then prints as individual labels on the Brother label printer.

Template Mode

Design the required document on your Windows PC, including logos and barcodes. Once transferred and stored in the printer's memory, the template can be recalled and any data replaced, before printing with just a few short commands.

Printer Commands

With support for ZPL II emulation and a variety of additional printer command languages, developers can easily integrate printing into existing legacy systems (see specification tables for further details).

Mobile Deploy

Cloud-based app for mobile devices (iOS and Android™), which allows IT administrators to remotely update and configure multiple Brother mobile printers. Using Mobile Deploy, the administrator can easily upload new update packages to an online location, and then share the URLs with the users.

Software Development Kits (SDKs)

Brother can also supply a selection of free of charge Software Development Kits to give you an easy method of incorporating label printing directly from within your own software programs. Available from: www.brother.eu/developer

Legacy Print Data Conversion

This feature simplifies integration with legacy systems by converting print commands into P-touch templates. These templates can be updated externally to the legacy system without the need of specialist knowledge of print languages such as EPL, ESC/POS and others.

Software

Model No	TD-2020	TD-2120N	TD-2130N	TD-4210D	TD-4410D	TD-4420DN	TD-4520DN	TD-4550DNWB	TD-4420TN	TD-4520TN	TD-4650TNWB	TD-4750TNWB	TD-4650TNWBR	TD-4750TNWBR
P-touch Editor	✓	✓	✓	✓	✓	✓	✓	✓						
Mobile Deploy App								✓						
Brother Font Manager*				✓	✓	✓	✓	✓						
Printer Settings Tool	✓	✓	✓	✓	✓	✓	✓	✓						
Bartender Ultra Lite Edition									✓	✓	✓	✓	✓	✓
Brother Printer Management Tool									✓	✓	✓	✓	✓	✓
Crop Function (Windows driver)							✓	✓						

* Compatibility may vary dependent on model - check table on following page

* Font licensee permissions are required

For further details visit: <https://support.brother.com>

TD-2000 Range in detail

TD-2020

TD-2120N

TD-2130N

2 Inch

Printing

Print technology	Direct thermal	
Print speed	MAX 6 ips (152.4 mm/sec) (*Under Brother standard environment) (Battery option: Max 3 ips (76.2mm/sec))	
Resolution	203dpi	300dpi
Max. print width	56mm (2.205 inch)	
Max. print length	1,000 mm (9.37 inch)	
Min. print length	6mm (0.24 inch)	
Media sensor type	Gap (transmissive), Bar (reflective)	
Media sensor location	Reflective (adjustable), Gap (fixed)	
Tear off release mode	Standard: Continuous, Tear off Optional: Not supported	Standard: Continuous, tear off Optional: Peeled

Media

Media types	Receipt, label and wristband
Media thickness	0.058mm - 0.279mm (0.0023 inch to 0.011 inch)
Media width	19mm - 63mm (0.75 inch to 2.48 inch)
Media length	12.7 mm - 1,000 mm (0.5 inch to 39.37 inch)
Diameter (max)	127mm (5 inch)
Core Diameter (max)	25.4mm (1 inch)

Connectivity

USB	●	●	●
Serial	Yes RS232C * Original serial cable (option required)		
Wired LAN	—	10/100BASE-TX	
USB host port	—	Supported only PA-WI-001 (optional) or barcode readers	
Bluetooth (option)	—	●	●
Bluetooth profile	—	SPP (Serial Port Profile) / BIP (Basic Imaging Profile) / OPP (Object Push Profile) supported	
Wireless LAN (option)	—	IEEE802.11b/g/n (Infrastructure Mode) IEEE802.11b (Adhoc mode)	
Wireless LAN security	—	Open System (None/WEP) <Personal mode> Open System (None/WEP) Public Key Authentication (WEP) WPA-PSK/WPA2-PSK (TKIP/AES) <Enterprise mode> LEAP (CKIP) EAP-FAST (TKIP/AES) PEAP (TKIP/AES) EAP-TTLS (TKIP/AES) EAP-TLS (TKIP/AES)	

General

Control panel	3 button 2 LED		
Touch panel keyboard display with real time clock (option)	—	●	●
Tear bar	●	●	●
Peeler	—	Optional	
Battery (option)	—	●	●
Battery charging time	—	180 min. (23°C New battery)	
Battery yield	—	57mm x 200m (1 roll : 5 inch OD roll) * Connected by USB with new battery with full charging. Printed by Brother special data *9% coverage 57mm x 127mm at 23 degree Celsius (*Under Brother standard environment)	
Adapter	Yes RS232C * Original serial cable (option required)		

TD-2000 Range in detail

TD-2020

TD-2120N

TD-2130N

2 Inch

Memory

RAM	32MB
Flash	16MB

Environmental

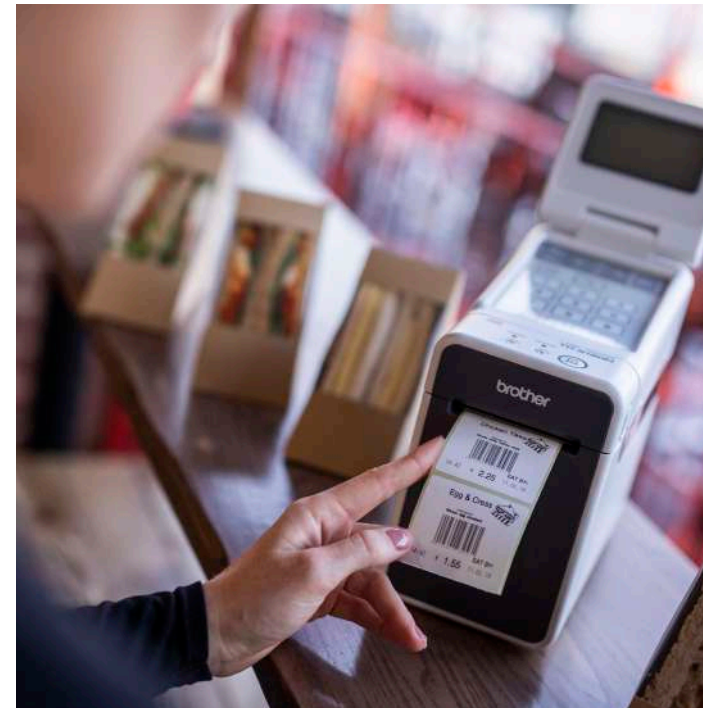
Media types	Operate: 5°C to 40°C	Operate: 5°C to 40°C Charge: 5°C to 40°C
Media thickness	20 to 80% (No condensation, Maximum wet bulb temperature: 27°C)	
Media width	-20°C to 60°C	
Media length	20 to 80% (No condensation, Maximum wet bulb temperature: 45°C)	

Weights & Dimensions

Dimensions (mm)	110mm (w) x 172 mm (h) x 215mm (d)	
Weights	Printer: 1.32kg 2.91 pound	Printer: 1.34kg 2.96 pound. Printer with battery: 1.88kg 4.15 pound

Included Items

Supplied in box	Printer	
	AC power cord & AC adaptor	
	CD (Printer Driver, P-touch Editor 5.0, P-touch Transfer Manager 2.1, P-touch Update Software, Printer Setting tool, User's Guide, Software User's Guide)	CD (Printer Driver, P-touch Editor 5.0, P-touch Transfer Manager 2.1, P-touch Update Software, BAdmin Light, Printer Setting tool, User's Guide, Software User's Guide, Network User's Guide)
	USB Cable (mini-USB)	
	Quick Reference Guide. Product Safety Guide (including warranty card)	



TD-4D Range

in detail

TD-4210D

TD-4410D

TD-4420DN

TD-4520DN

TD-4550DNWB

4 Inch

Printing

Print technology	Direct thermal		
Print speed	127mm/sec	203mm/sec	152mm/sec
Resolution	203dpi		300dpi
Max. print width	104.1mm		108.4mm
Min. print length	Continuous: 6.4mm, Peeler: 12.7mm, Cutter: 20mm, Tear: 27mm		
Max. print length	3000mm		
Media sensor type	Gap (Transmissive), Bar (Reflective)		
Media sensor location	Gap (Fixed), Reflective (Adjustable)		
Tear off release mode	Standard: Continuous, Tear off Optional: Peeler, Cutter		

Media

Media types	Wristbands, Continuous, Die cut, Fan fold, Perforated, Tag
Media thickness	0.058mm - 0.279mm (0.002 inch to 0.011 inch)
Media width	19mm - 118.11 mm (0.75 inch to 4.65 inch)
Media length	6.4mm - 3,000 mm (0.25 inch to 118.11 inch)
Diameter (max)	127mm (5 inch)
Core Diameter (min)	12.7mm (0.5 inch)

Connectivity

USB	USB version 2.0 (full speed) Type B		
USB host capability	—		●
Serial	Serial RS232C (DB9 male)		
Wired LAN	—	10/100BASE-TX	
USB host port	—		●
Bluetooth	—		Version 4.2
Bluetooth profile	—		SPP, OPP, HCRP Bluetooth Classic, GATT (Bluetooth Low Energy)
Wireless LAN	—		802.11a/b/g/n
Wireless LAN security	—		See model TD-4650TNWB specifications and also includes Wireless direct mode WPA2-PSK (AES)
MFI support	—		●
AirPrint	—		●
Wired LAN	—	●	●

TD-4D Range

in detail

TD-4210D

TD-4410D

TD-4420DN

TD-4520DN

TD-4550DNWB

4 Inch

General

Control panel	3 button 3 LED	7 button 3 LED
LCD type	—	

Power

Adapter	AC adapter (100 - 240V 50/60Hz)
---------	---------------------------------

Software

Operating system support	Windows 7/8/8.1/10/11 Linux	Windows 7/8/8.1/10/11 Windows Server 2008/2008R2/2012/2012R2/2016 Linux
--------------------------	--------------------------------	---

Supported printer commands	P-touch Template, ESC/P, Raster, ZPL2, EPL2, DPL, CPCL emulation
----------------------------	--

Barcode symbologies	Linear: CODE 39, ITF(I-2/5), EAN-8(JAN8), EAN-13(JAN13), UPC-A, UPC-E, CODABAR (NW-7), CODE 128, GS1-128 (UCC/EAN 128), GS1 Databar (Standard (Omnidirectional)/Truncated/Stacked/Stacked Omnidirectional/Limited/Expanded), CODE93, POSTNET, UPC/EAN EXTENSION, MSI, Intelligent Mail Barcode 2-dimensional: QR Code (model 1, model 2, micro QR), Maxicode, PDF417 (Standard, Truncate, MicroPDF417) Data Matrix (ECC200 Square, ECC200 Rectangular) Aztec
---------------------	--

Internal fonts	ESC/P> Bitmap font: LetterGothicBold (16,24,32,48dot), Helsinki (16,24,32,48dot), Brussels (24,32,48dot), Brougham (24,32,48dot), San Diego (24,32,48dot), Gothic (16,24,32dot) Outline font: LetterGothicRegular, Helsinki, Brussels, Gothic (1 - 400dots) <P-touch Template> Outline font: LetterGothicRegular, Helsinki, Brussels, Gothic (1 - 400dots) Downloadable font support* via Font Manager software
----------------	--

Memory

RAM	256MB
Flash	64MB

Environmental

Operating temperature	Operate: 5°C to 40°C
Operating humidity	20 - 85% (No condensation, Max wet bulb temperature: 27°C)
Storage temperature	-20°C to 60°C
Storage humidity	10 - 90% (No condensation)

Weights & Dimensions

Dimensions (mm)	180(w) x 155(d) x 224(h)
Weights	2.08kg

Included Items

Supplied in box	AC adaptor & cord, USB cable, documentation
-----------------	---

* Not suitable for RFID media

TD-4T Range

in detail

TD-4420TN	TD-4520TN	TD-4650TNWB	TD-4750TNWB	TD-4650TNWBR	TD-4750TNWBR
4 Inch					

Printing

Print technology	Thermal Transfer/Direct Thermal					
Print speed	152mm/sec	127mm/sec	203.2mm/sec	152.4mm/sec	203.2mm/sec	152.4mm/sec
Resolution	203dpi	300dpi	203dpi	300dpi	203dpi	300dpi
Max. print width	108mm	105.7mm	108mm	105.7mm	108mm	105.7mm
Min. print length	Peeler: 25.4mm, Cutter: 25.4mm Tear: 50mm		Continuous: 5mm Tear mode: Media width less than 2 inch: 25.4 mm Media width greater than 2 inch: 50 mm Peeler mode: 25.4mm Cutter mode: 25.4mm			
Max. print length	25,400mm	11,430mm	25,400mm	11,430mm	25,400mm	11,430mm
Media sensor type	Gap (Transmissive), Bar (Reflective)					
Media sensor location	Gap (Fixed), Reflective (Adjustable)					
Tear off release mode	Standard: Continuous, Tear off Optional: Peeler, Cutter		Standard: Continuous, tear off Optional: Peeler, Cutter		Standard: Continuous, tear off Optional: Peeler, Cutter*	

Media

Media types	Wristbands, Continuous, Die cut, Fan fold, Perforated, Tag	Media type Continuous, black mark, label with gap, notch media, punched hole media	Media type Continuous, black mark, label with gap, notch media, punched hole media, Gen2 RFID tag
Media thickness	0.06 - 0.19 mm (0.002 inch to 0.007 inch)		
Media width	20 - 112mm (0.79 inch to 4.41 inch)		
Media length	5mm - Max. print length (0.20 inch to Max inch)		
Diameter (max)	127mm (5 inch)		
Core Diameter (min)	25.4mm & 38.1mm (1.0 inch & 1.5 inch)	25.4mm & 38.1mm	

Ribbon

Types	Wax, Wax/Resin, Resin
Wound type	Outside wound
Ribbon width	40 - 110 mm (1.57 inch to 4.33 inch)
Suggested paper core width	0.5 inch paper core: fixed width 110mm, width 2 notches in each side fixed width 110mm with 2 notches in each side 1inch paper core: paper core width is the same as ribbon width and use with ribbon spindles
Inner paper core & ribbon length	0.5 inch paper core: Max. OD 40mm, 110m length 1inch paper core: Max. OD 67mm, 300m length

Connectivity

USB	USB version 2.0 (full speed) Type B	USB Version 2.0 (High Speed)
USB host capability	● ●	● ● ● ●
Serial	Serial RS232C (DB9 female)	Serial RS232C (DB9 female)
Wired LAN	10/100BASE-TX	
USB host port	● ●	● ● ● ●
Bluetooth	—	Version 5.0
Bluetooth profile	—	SPP, Bluetooth Classic, GATT
Wireless LAN	—	802.11a/b/g/n
Wireless LAN security	—	Authentic method (encryption scheme) Infrastructure mode - Open system (None/ WEP64/WEP128) Common key authentication (WEP) WPA/WPA2 - PSK (TKIP+AES) EAP-FAST (TKIP/AES), PEAP (TKIP/AES), EAP-TLS (TKIP/AES), EAP-TTLS (TKIP/AES)
MFI support	—	—
AirPrint	—	—
Wired LAN	● ●	● ● ● ●

* Not suitable for RFID media

TD-4T Range

in detail

TD-4420TN	TD-4520TN	TD-4650TNWB	TD-4750TNWB	TD-4650TNWBR	TD-4750TNWBR
4 Inch					

General

Control panel	1 button 1 LED with 3 colours	1 LED with 3 colors, 6 buttons for Navigation, MENU and FEED/PAUSE/SELECT
LCD type	—	Colour
Adapter	AC adaptor Input: AC 100-240V, 2.0A, 50-60Hz Output: DC24V, 2.5A, 60W, LPS	AC adaptor Input: AC 100-240V, 2.0A, 50-60Hz Output: DC 24V, 3.75A, 90W CEC6 compliance

Software

Operating system support	Windows 7, 8, 8.1, 10, 11 Windows Server 2008, 2008 R2, 2012, 2012 R2, 2016, 2019 Linux Mac OS v10.6-11
--------------------------	--

Supported printer commands	FBPL-EZD (EPL2, ZPL2, DPL) emulation
----------------------------	---

Barcode symbologies	Linear: Code128UCC, Code128 subsets A, B, C, EAN128, Interleaved 2 of 5, Interleaved 2 of 5 with check digit, Code39, Code39 with check digit, Code93, EAN13, EAN8, UPCA, UPCE, EAN and UPC 2 (5) digits add-on, Codabar, Postnet, MSI, MSI with check digit, PLESSEY, China post, ITF14, Code11, TELEPEN, TELEPENN, PLANET, Code49, Deutsche Post Identcode, Deutsche Post Leitcode, LOGMARS 2-dimensional: GS1 DataBar, GS1 DataMatrix, Maxicode, AZTEC, PDF417, QR Code, Micro PDF 417
---------------------	--

Internal fonts	8 alpha-numeric bitmap fonts for FBPL Monotype Image® true type font engine with one CG Triumvirate Bold Condensed scalable font
----------------	---

Memory	RAM	64MB	128MB
Flash	128MB		

Environmental

Operating temperature	Operate: 5°C to 40°C
Operating humidity	25 - 85% non-condensing
Storage temperature	-40°C to 60°C
Storage humidity	10 - 90% (No condensation)

Weights & Dimensions

Dimensions (mm)	204(w) x 178(d) x 280(h)	219(w) x 284(d) x 191(h)
Weights	2.5kg	3.0kg

Included Items

Supplied in box	AC adaptor & cord, USB cable, documentation, Pair of 1" Ribbon spindles for 300M ribbon 1" ribbon paper core	Printer AC code & AC adaptor A pair of 1" Ribbon spindles for 300M ribbon 1" ribbon paper core USB Cable (1.5m) Quick Start Guide Product Safety Guide (including warranty card)
-----------------	--	--

brother

at your side

Contact:

www.brother.co.uk

Brother UK Ltd.

Shepley Street, Audenshaw
Manchester, M34 5JD
Tel: +44 (0) 333 777 4444

All specifications correct at the time of printing (May 2022) and are subject to change. Brother is a registered trademark of Brother Industries Ltd. Brand product names are registered trademarks or trademarks of their respective companies.